

WITS ICT



Cisco AnyConnect VPN - WINDOWS

Document Code	:	
Call Category	:	
Call Type	:	VPN - WINDOWS

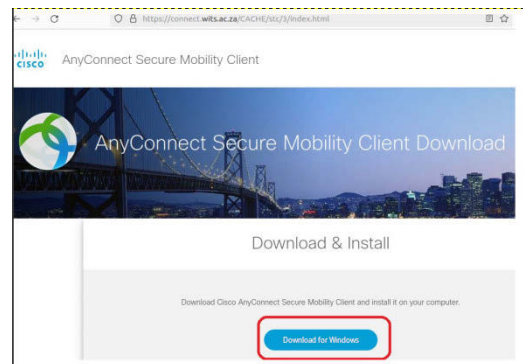
Installation Guide

Logon to the Wits VPN web site: <https://connect.wits.ac.za>

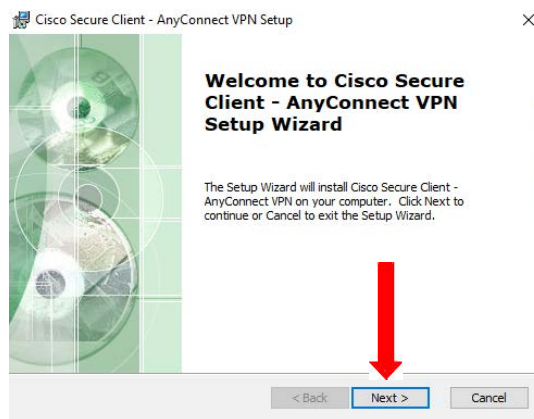
Enter your **staff** or **student id** and your **password**.



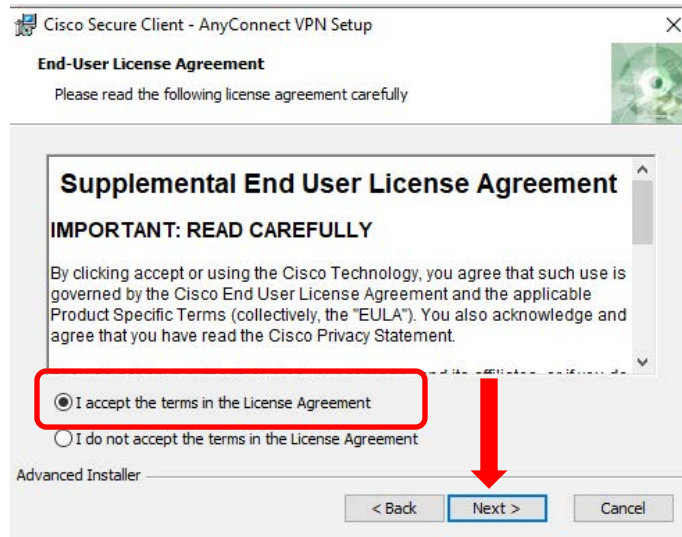
Download the VPN software by clicking on the download button. Double click on the downloaded file to begin the installation.



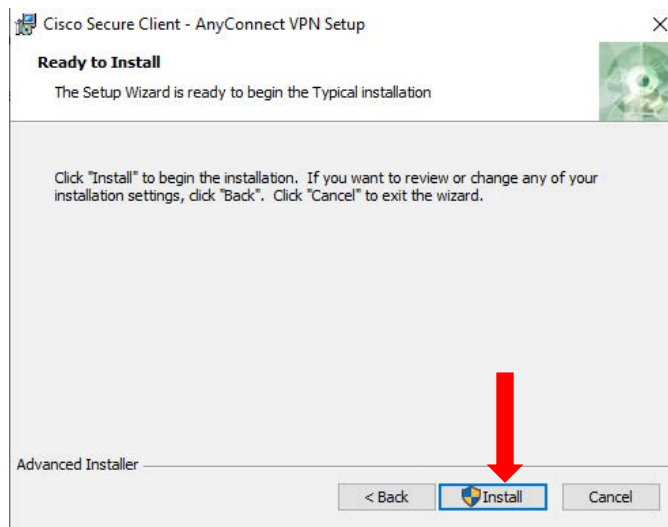
On the Welcome window, click on the **“Next”** button.



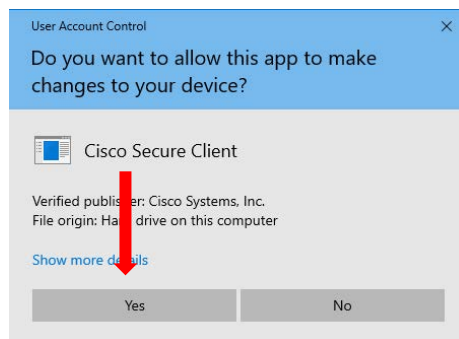
On the “End-User License Agreement” window, select the “I accept the terms in the License Agreement” and click on the “**Next**” button.



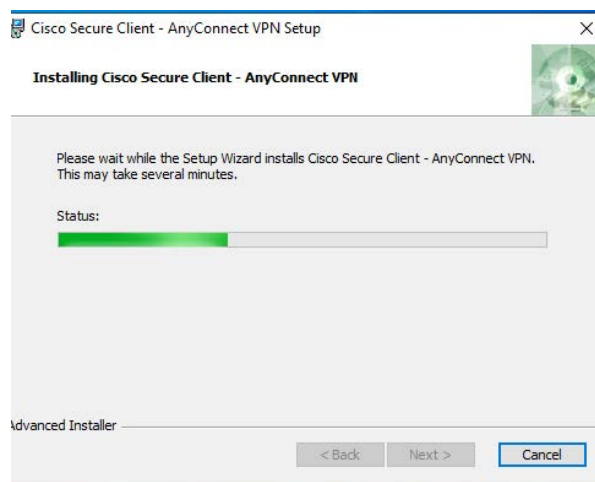
Start the installation process by clicking on the “**Install**” button.



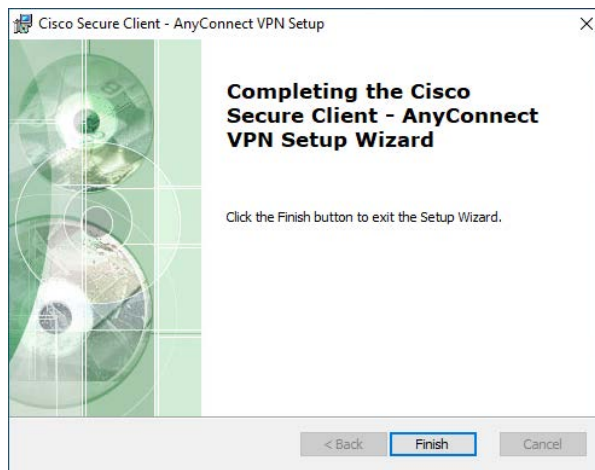
A "User Account Control" popup box might appear. Click on the "Yes" button to continue.



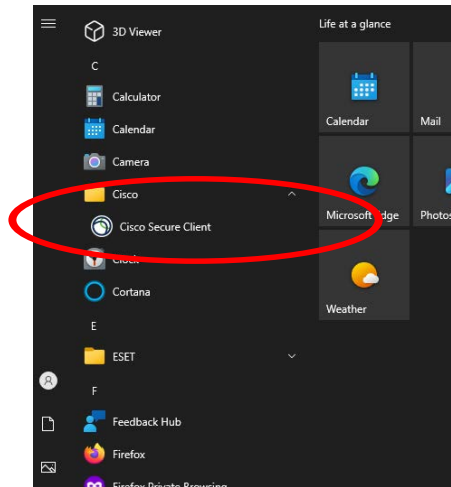
Installing...



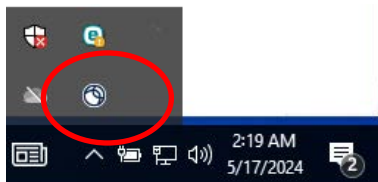
To complete the installation process, click on the "Finish" button.



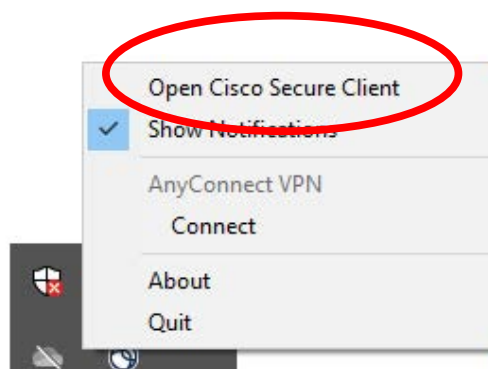
Start up the Cisco Secure Client program. In some cases it is best to reboot the PC after the install.



To use Cisco Secure Client, right click on the Cisco icon on the bottom right of the screen.



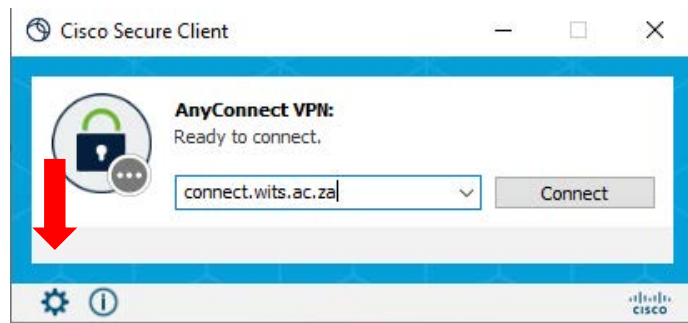
Click on "Open Cisco Secure Client" option.



Type in the server address: **connect.wits.ac.za** or **mobileconnect.wits.ac.za**

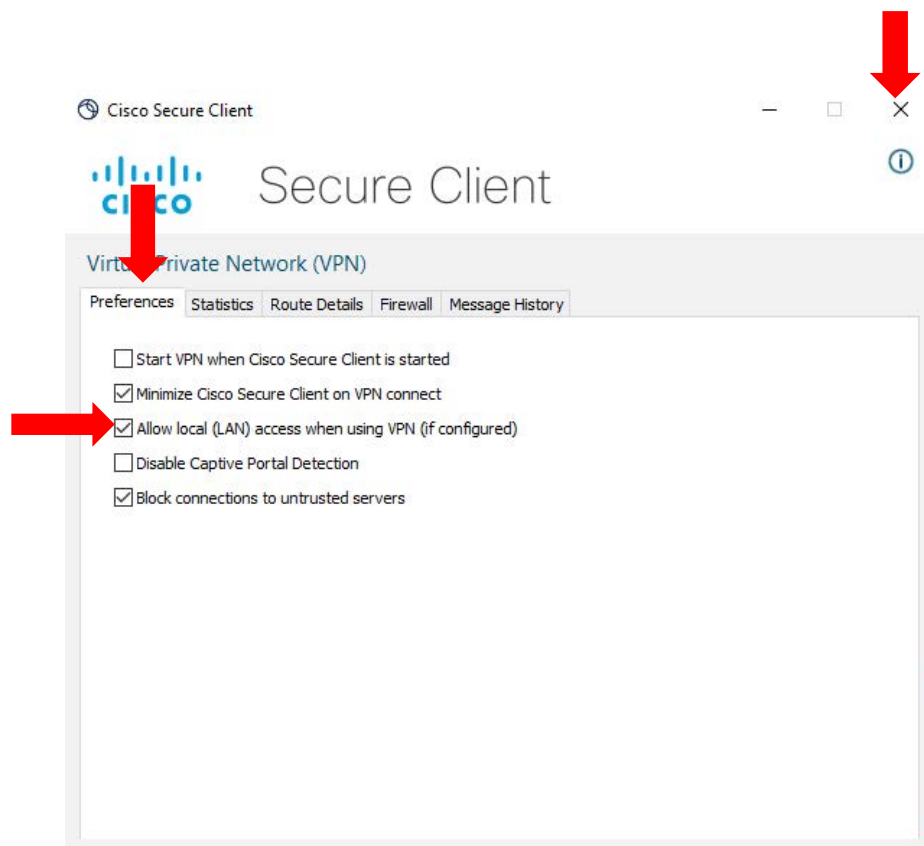
This is dependent on the type of VPN you want to connect to.

Click on the “Advanced Window” symbol as below.

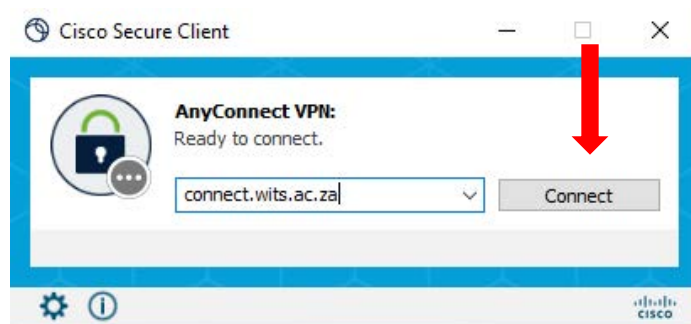


The Secure Client Advanced settings window will open.

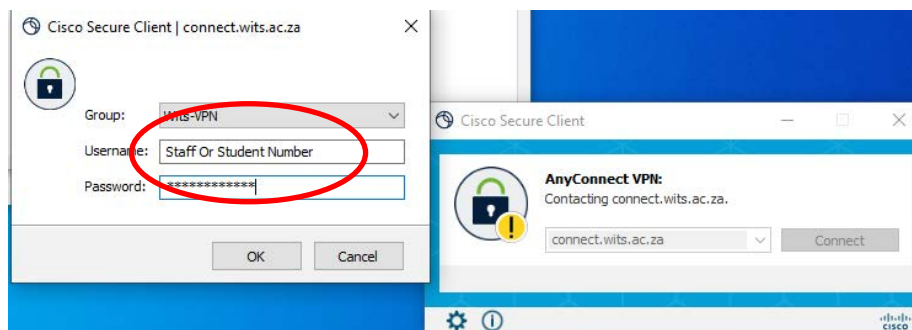
Click the “**Preferences**” tab if it is not open. Tick the “Allow local (LAN) access when using VPN (if configured)” option. Close the window by clicking on the cross on the top right corner of the window.



Click on the “Connect” button to start the VPN session.



A popup window will appear asking for your AD credentials. For staff use your **staffnumber** and for students use your **studentnumber**. Enter your password.



Once you have successfully connected, a tick will appear on the lock as in the screen below.

