

UNIVERSITY OF THE
WITWATERSRAND,
JOHANNESBURG



THE CENTRE FOR DEAF STUDIES

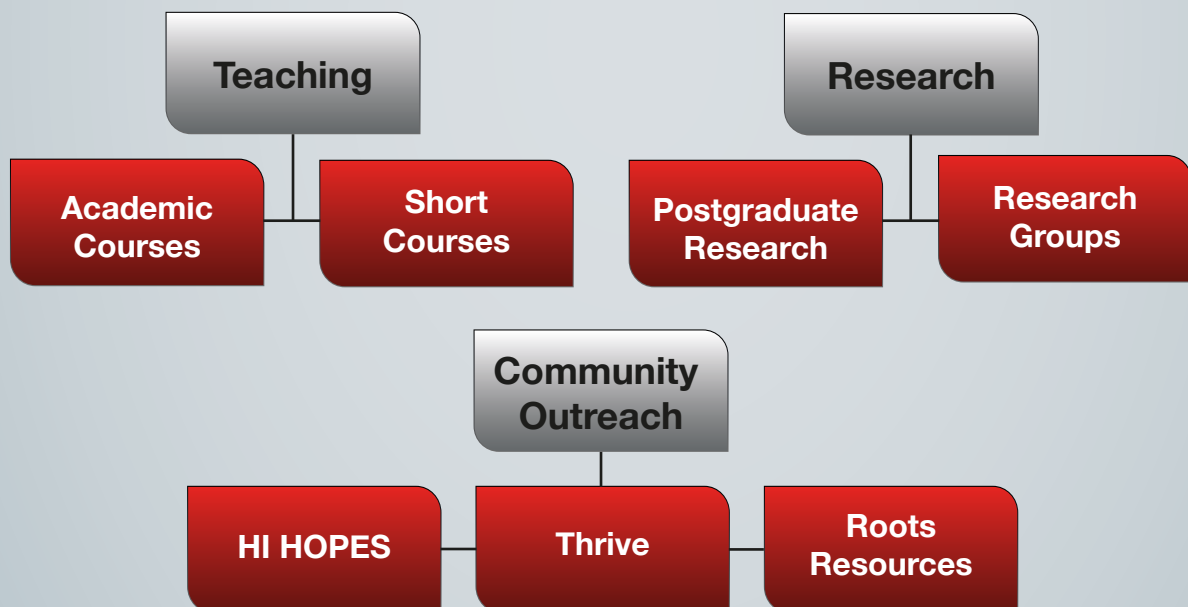
A Centre of Excellence in Africa



Through innovative teaching, research and community engagement, the Wits Centre for Deaf Studies aims to equip, develop and improve the lives of Deaf and hard of hearing people across their life-span in order to foster equal opportunities for all.



Our Pillars



Teaching

We teach academic and short courses including:

- Bachelor of Education Honours, Masters and PhD
- Postgraduate diploma in Deaf Education
- Postgraduate Certificate in Education in South African Sign Language
- Short courses: The First 1000 Days, Family-centred Early Intervention
- Online courses
- Tailor-made courses

Research

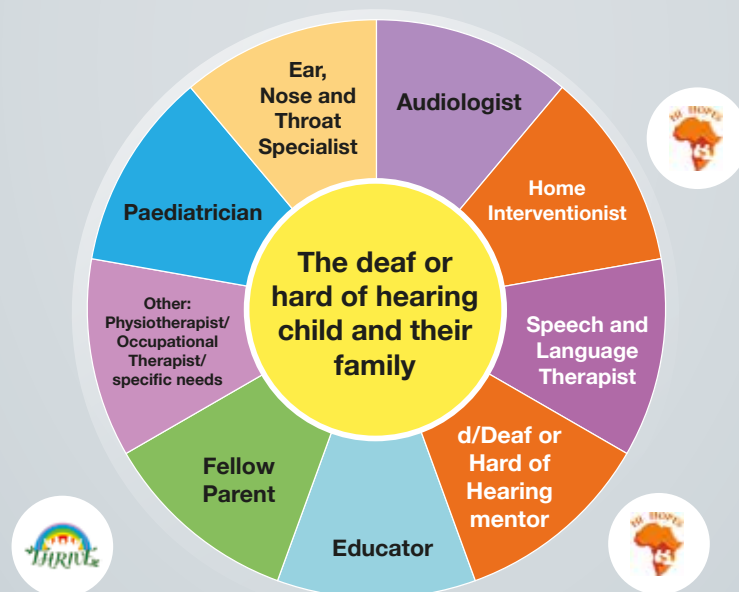
We are a research-active Centre with both academics and postgraduate students involved in conducting relevant and community-based research. The research agenda aims to grow academic strength in the field of Deaf Studies and ensure equal access and a better future for the Deaf Community throughout their lives.

The objectives are to:

- Attract and grow the number of Deaf researchers and leaders in the field, as well as the number of hearing researchers and practitioners working in the field of Deaf Studies
- Elevate the quality of Deaf education in South Africa in order to impact both policy and practice
- Encourage multidisciplinary collaboration

Community Outreach

In addition to great strides in teaching and research, the Centre is proud to be making an impact within local communities on a daily basis. The HI HOPES programme is a home-based community outreach initiative that, for 12 years, has empowered Home Interventionists and Deaf Mentors to support over 2400 families and their deaf and hard of hearing infants. In partnership with Thrive, a parent to parent support programme, the HI HOPES model is a family-centred programme that promotes an holistic, interdisciplinary approach to supporting the unique needs of families and their deaf infant.



HI HOPES Research Objectives

- To **evidence** the impact and outcomes of HI HOPES work with deaf babies and their families
- To build a consistently **evaluative** culture
- To disseminate the findings/outcomes and **influence** policy and practice
- To **benefit** deaf babies and their families – the service user group
- To **contribute** to the professionalisation of the field nationally and internationally
- To **sustain** HI HOPES in the future

Looking Forward

New and innovative areas of growth for the next 20 years

- Expansion to support the DeafBlind Community and their families
- Creation of online resources to increase accessibility to courses
- Deaf Resource Development and Publishing Unit – Roots Resources
- Research into sensory and embodied epistemology
- International “Deaf Art” Gallery and online portal

How can you get involved?

- Fund a Research Chair or Research Unit
- Invest in Early Infant Development
- Sponsor a teacher, deaf infant or family
- Leave a legacy in the form of a bequest
- Nominate HI HOPES as a beneficiary on your “My School” card
- Run/cycle for deaf children
- No contribution is too small or too large

CONTACT US

The Centre for Deaf Studies, Thembalethu Building
27 St Andrews Road, Parktown 2000 | **Office direct line:** 011 717 3750

Prof. Claudine Storbeck | Director: Centre for Deaf Studies:
Claudine.storbeck@wits.ac.za | Claudine.storbeck@gmail.com

Mr Lucas Magongwa | Head: Deaf Education
Lucas.Magongwa@wits.ac.za

Yvette Vivian | Coordinator: HI HOPES Operations
Yvette.Vivian@wits.ac.za

