

My Place in Yeoville

402 Rockview Heights
20 Percy St
Yeoville
2198



*Simon Sizwe Mayson
MSc Developing Planning
Wits University*

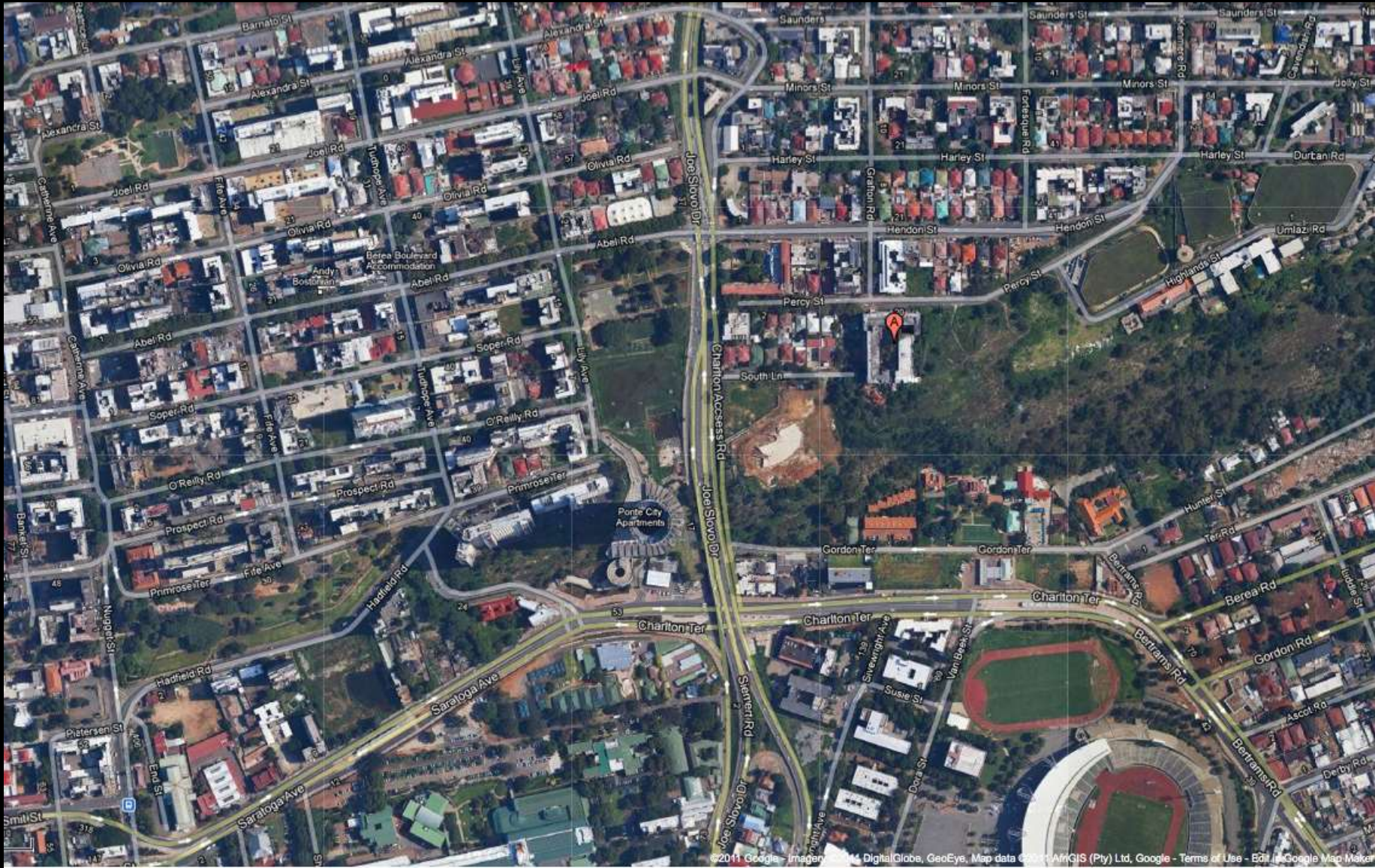
*School Talk:
'Housing Stories'
Yeoville Studio*

Presented 14 August 2011



SCHOOL
ARCHITECTURE
PLANNING



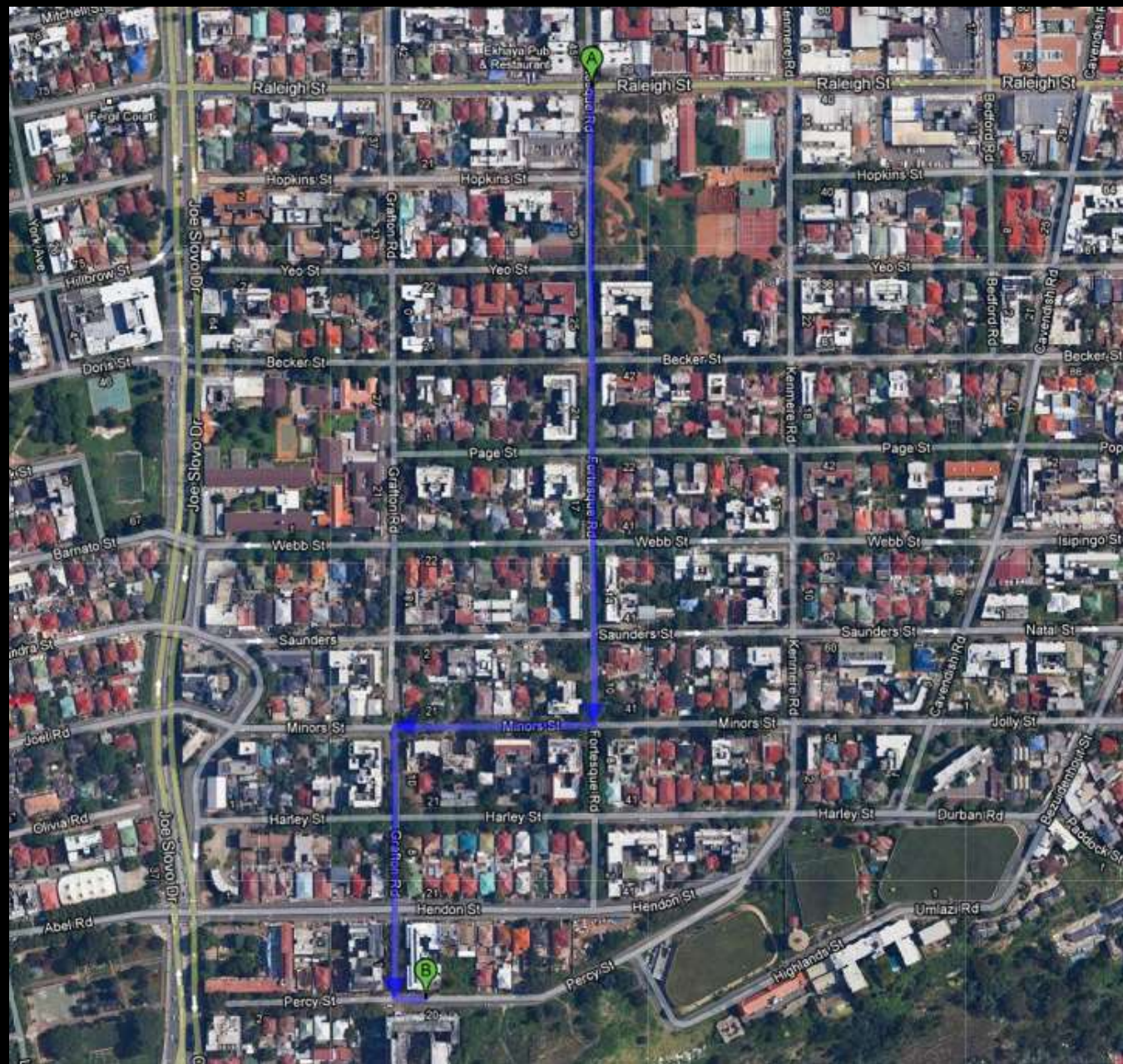


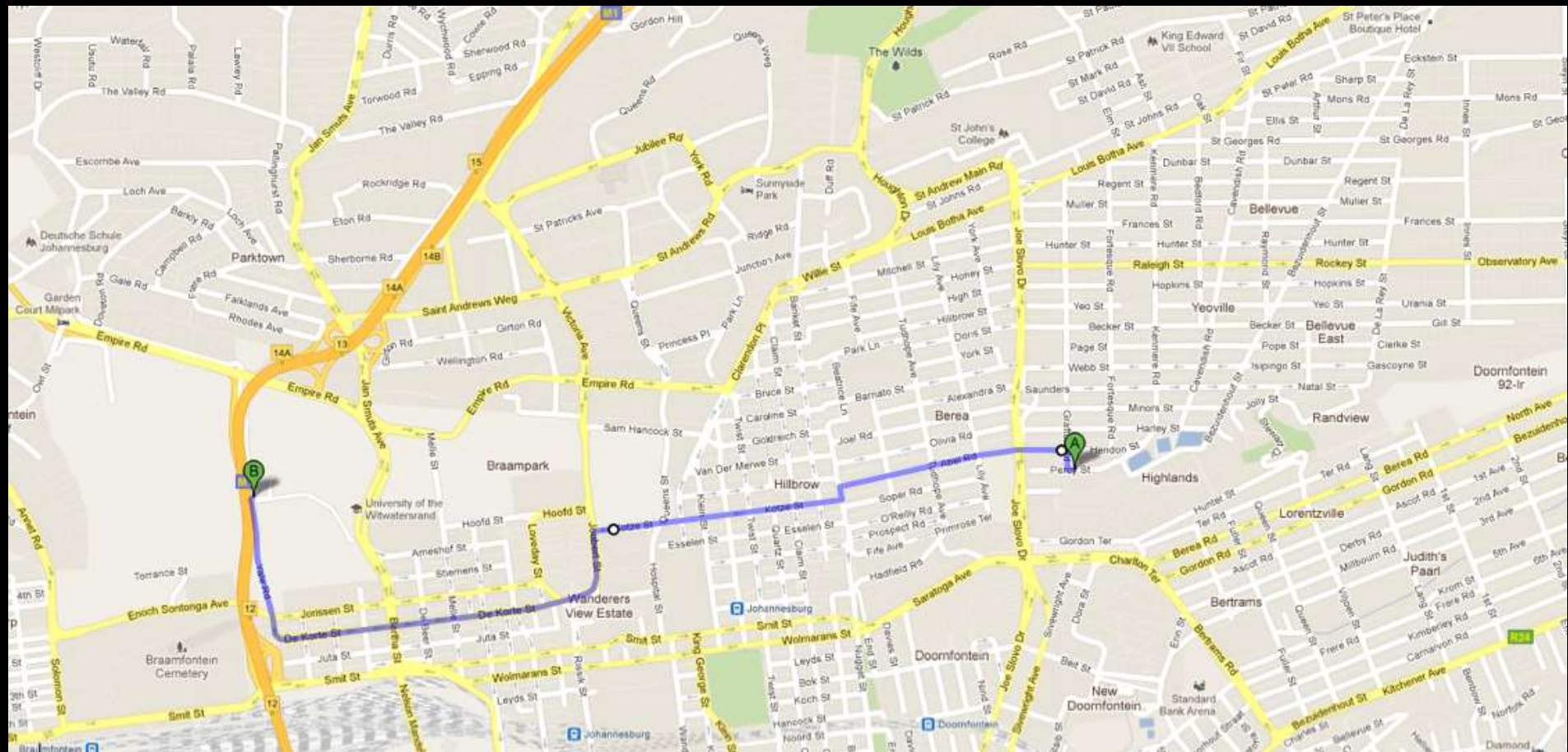
©2011 Google - Imagery © DigitalGlobe, GeoEye, Map data © 2011 AMGIS (Pty) Ltd, Google - Terms of Use - Edited by Google Map Maker



**SCHOOL
ARCHITECTURE
PLANNING**

























Hi.



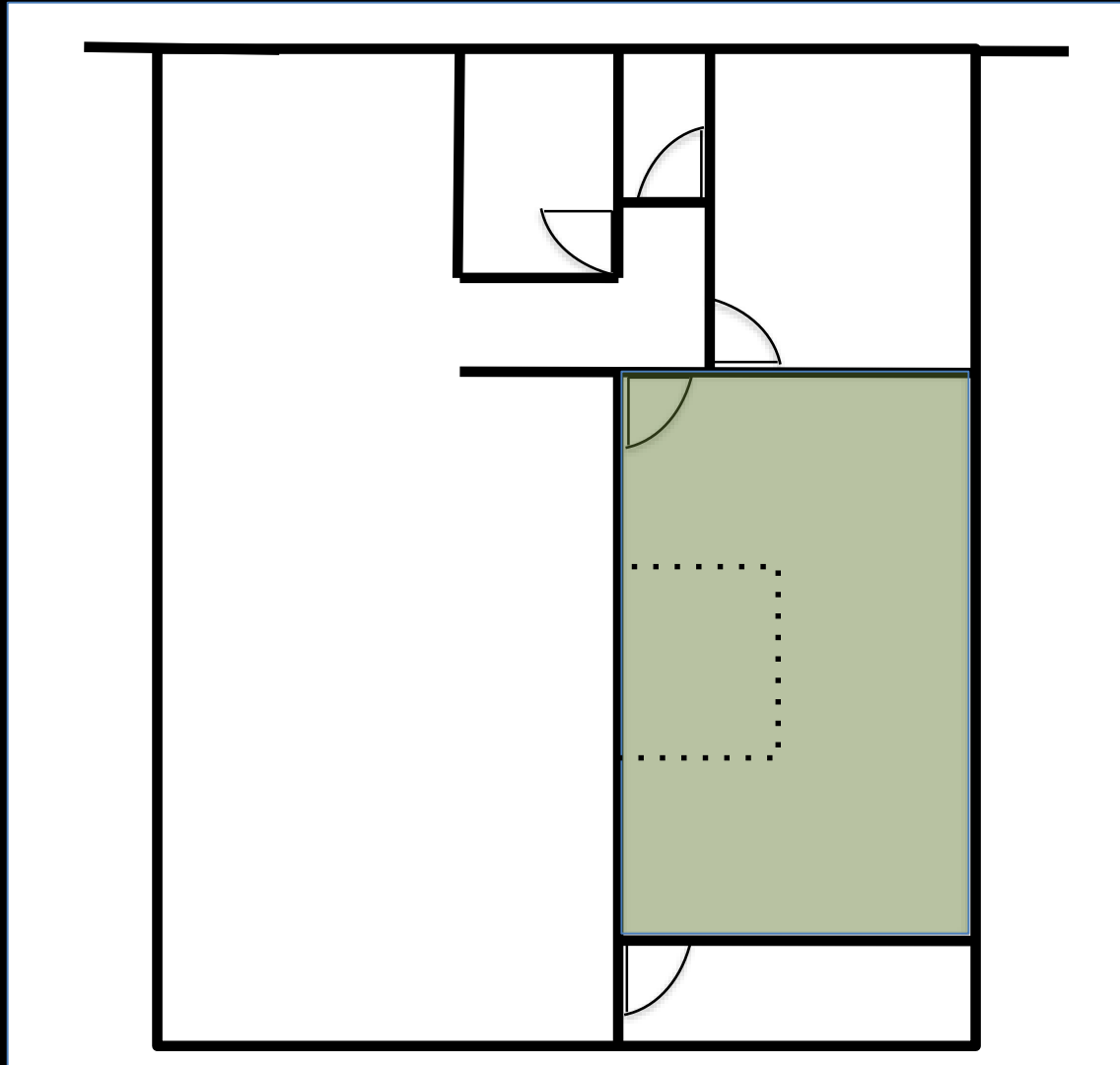
But WHY?

- For the love of YS
- Compact living
- Communal living
- Masters thesis
 - Participant observation
 - One of the case study models
- Lack of knowledge – the City, academia, even the media
- Practice what you preach
- Street cred

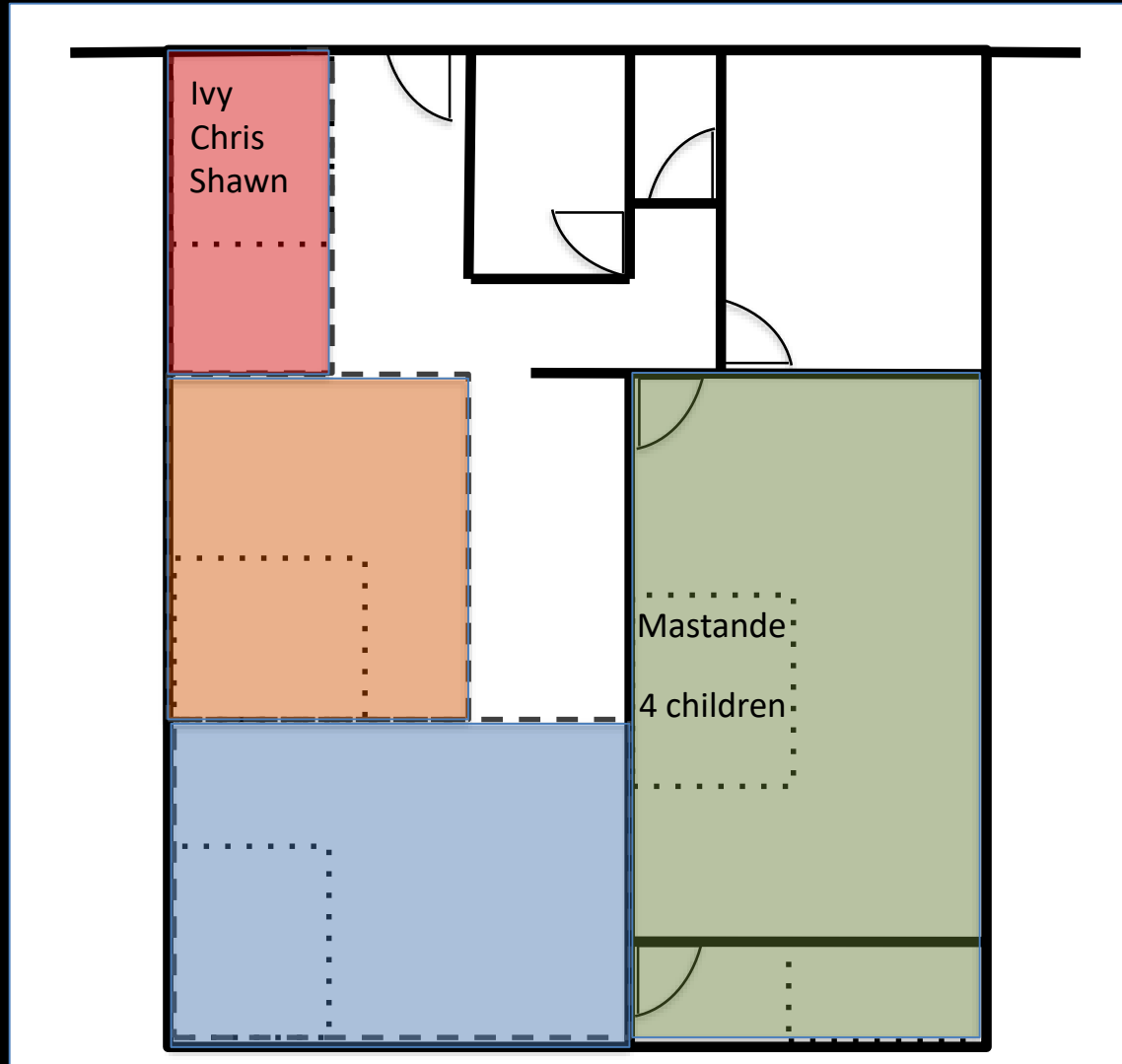
Trajectories

402 Rockview Heights

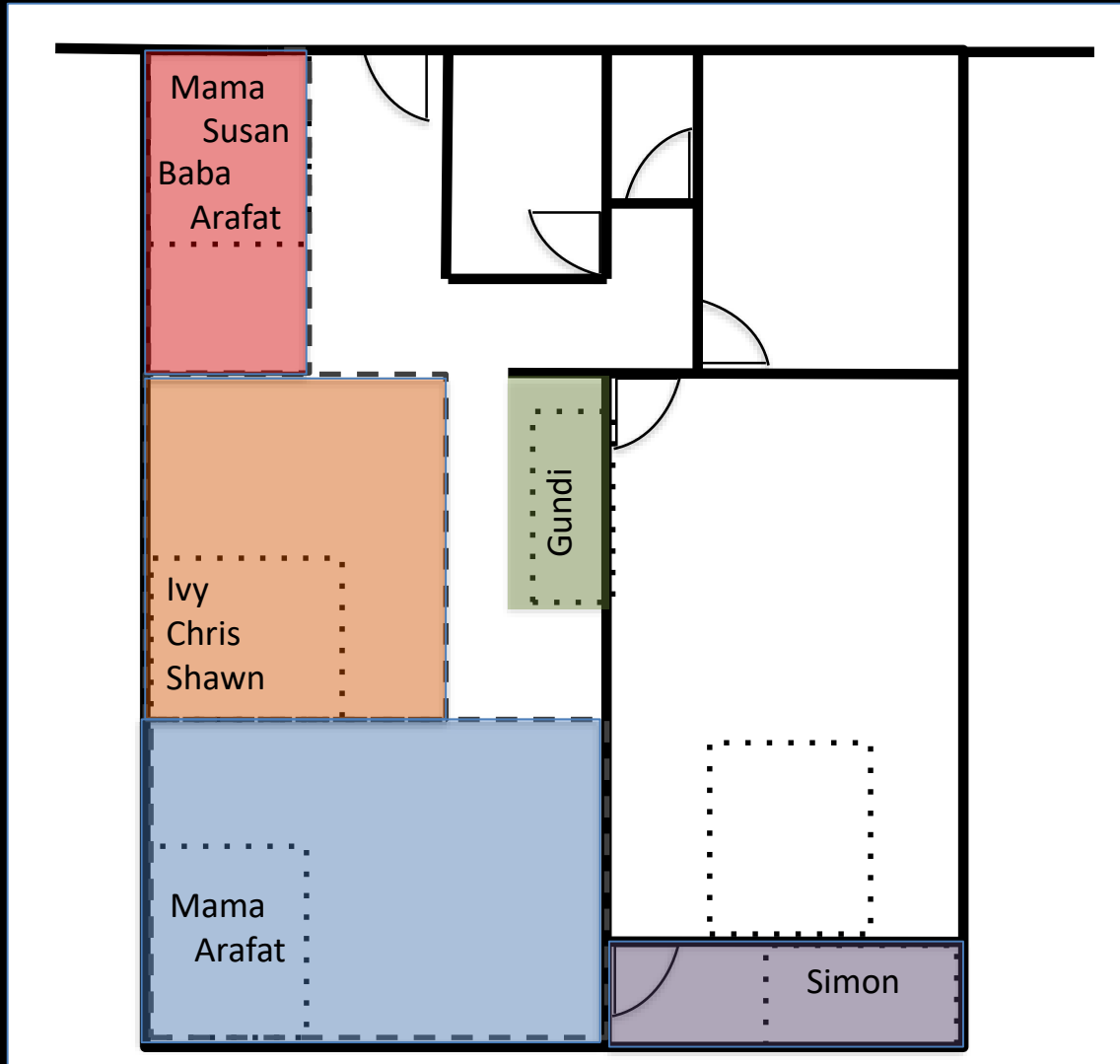
The Original



Pre June



June



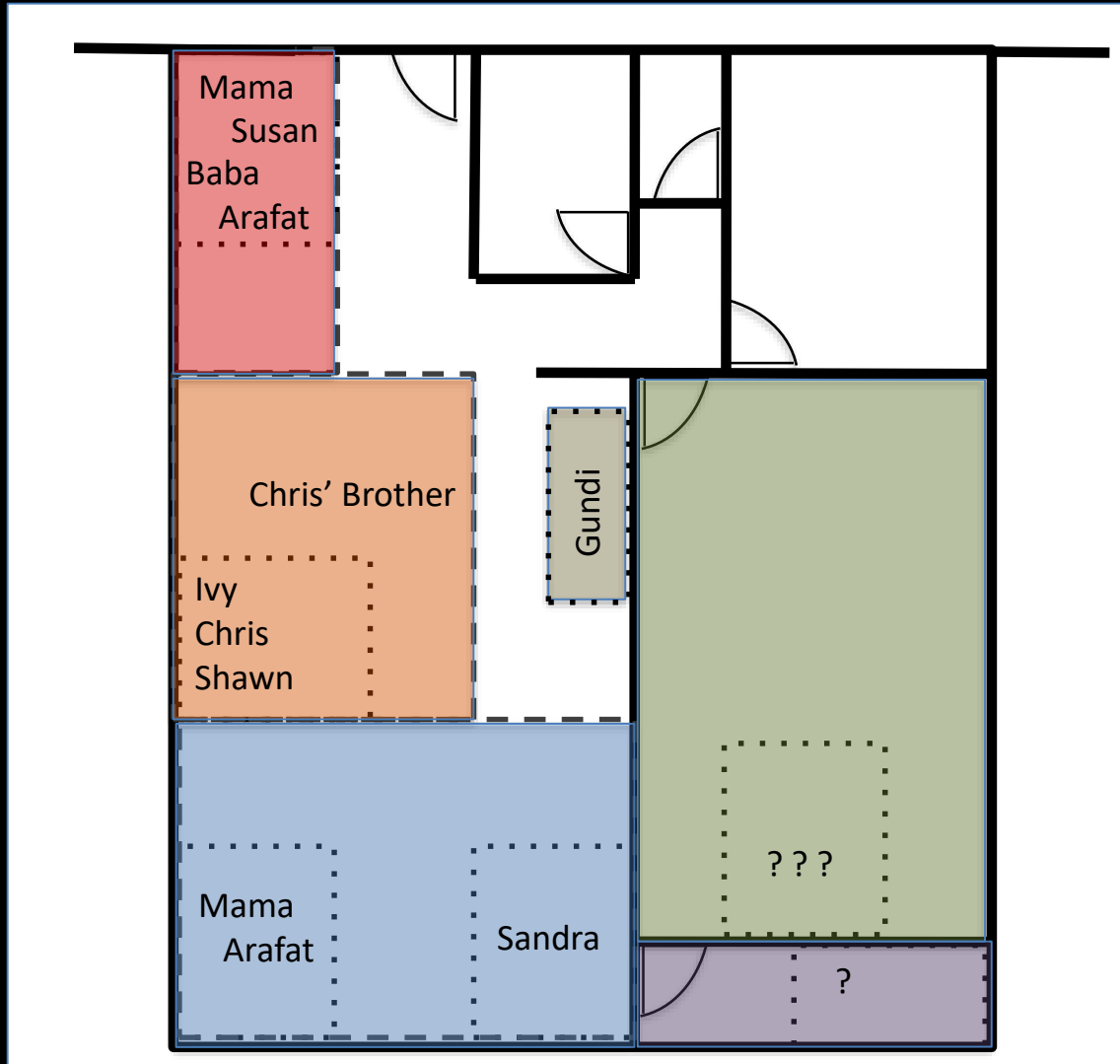
People



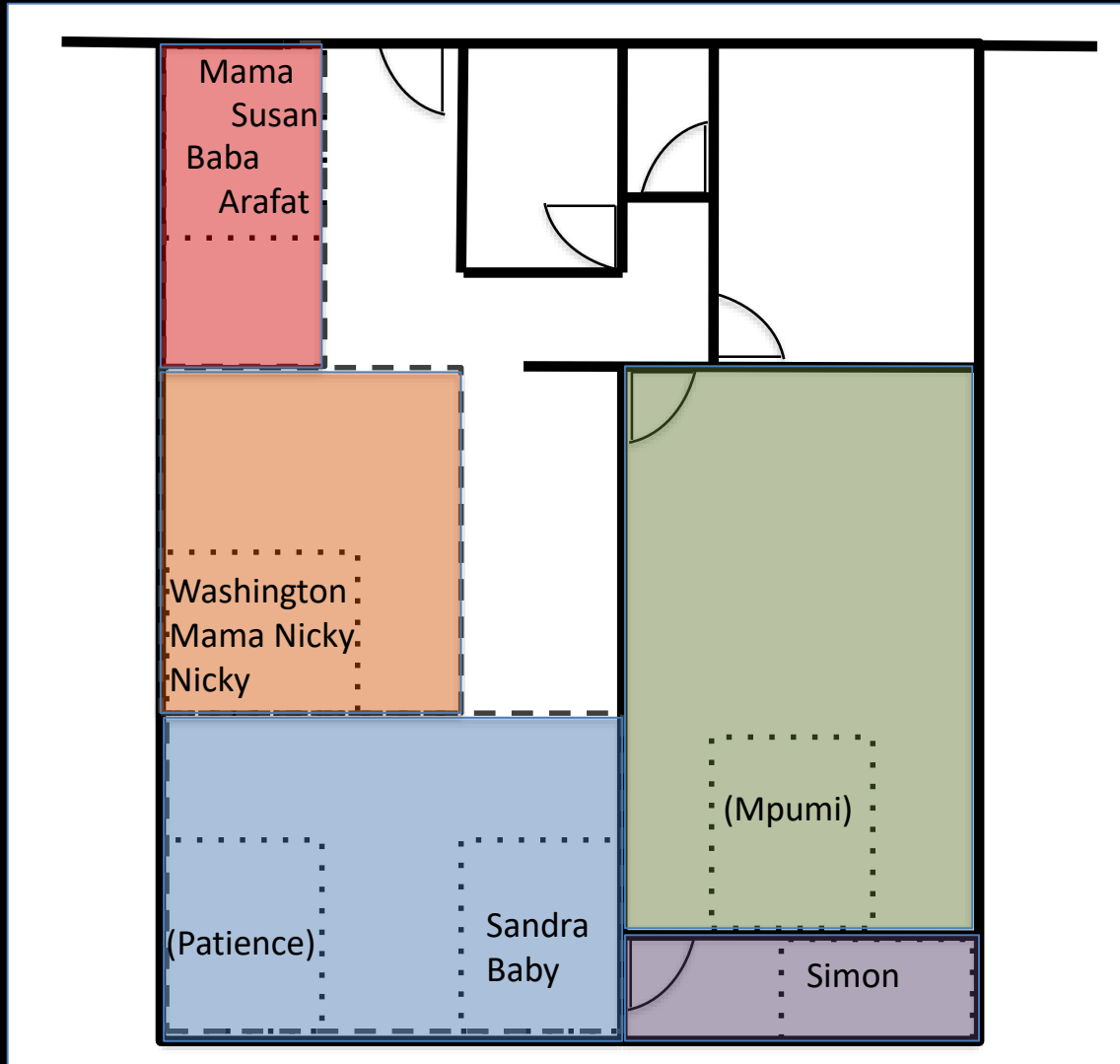
Spaces



July



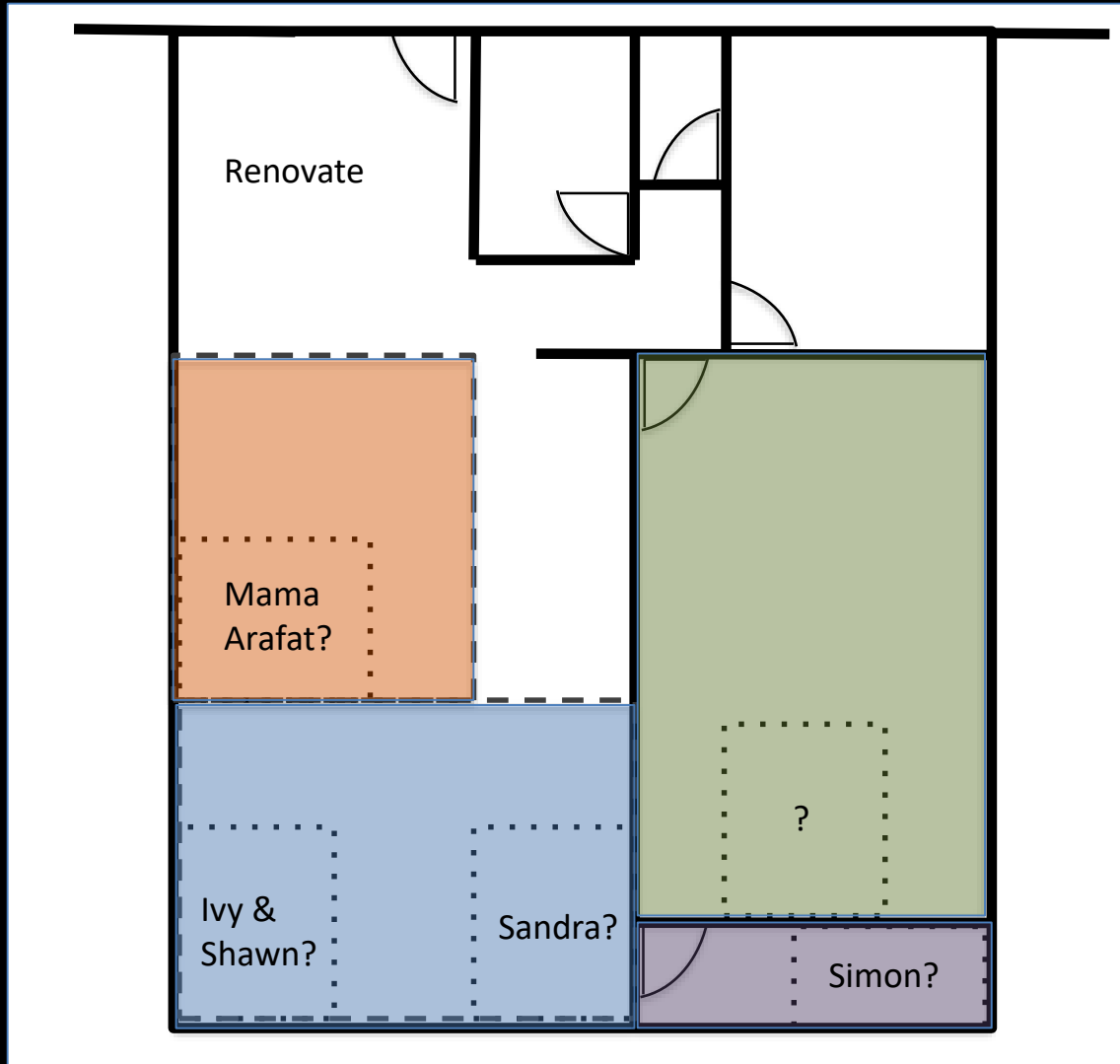
August



People and Spaces



September



Subplots



The Romance of Rockview



The Not So Romantic



Surrounds



So what does this all mean?

People are doing it for themselves,
the way planners would plan for them to do it?

- Has community and public life
- Local community identity
- Relative integration
- Is central
- Is dense, compact
- Has open space
- Full services
- Affordable
- Diverse
- Allows flexibility
- Covers people's basic needs
- Integration of activities – mixed use
- Living, working, shopping, public, spiritual, recreational
- Buildings arranged to define public space rather than sit in it (Urban design - Spaces surrounded by buildings more likely to bring people together => public interaction ... Electricity cuts...)

But is it...

- Sustainable?
 - Developers/ owners yes in the ST
 - Even investing in new stock – but...
 - Jika properties buying up
 - People yes – carry on living there, prefer it there than elsewhere e.g. townships
 - BUT long term basic maintenance, services?
- Healthy?
- Safe?
- Livability?
- Identity and control

The Research Experience

- My own experiences
- Space, money, (noise)
- Dependencies, exposure
- Pests
- Water, services
- Gossip
- Violence
- Permanence
- Property
- Environmental vulnerability

The Research Experience

- Test of participant observation in field of planning: Allowed for
 - Deep understanding
 - Accuracy: an interview sceptic
 - Longitudinal
 - Even just the basics
- Perhaps most NB: the ‘practical’ knowledge
 - => property development
- People have a face, being poor has a face
- Realisation about the real lack of options
- Stress

The Research Experience

- Qualitative – pros and cons
- Difficulty of some forms of research
- Ability to generalise?
- Even though living in same place, in smaller space, disparities are huge between me and those I share with

The Research Project

*What people say, what they do,
and what they say they do*

Where to from here?

- Comparisons
- Different forms of research

- Thesis
- Development?

