

GENERAL NOTES:-

NOTE: ALL DIMENSIONS TO BE CONFIRMED ON SITE PRIOR TO FABRICATION

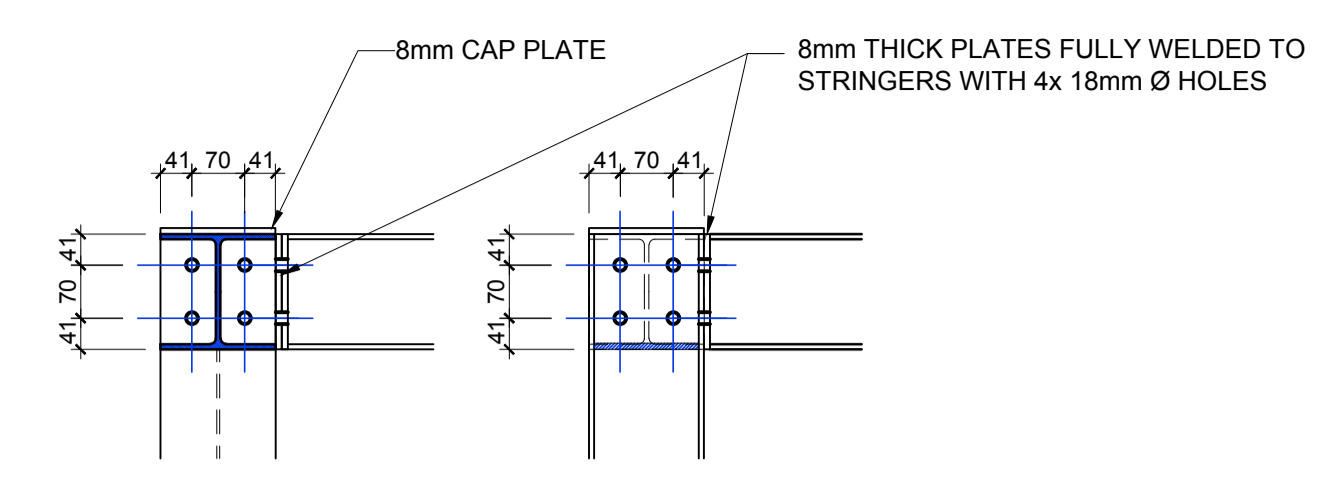
NOTE: ALL STEEL SECTIONS SHOWN TO BE 152x152x23 H-SECTIONS UNLESS OTHERWISE SPECIFIED

NOTE: ALL STEEL TO STEEL CONNECTIONS TO BE FIXED USING GRADE 8.8 M16 BOLTS UNLESS OTHERWISE SPECIFIED

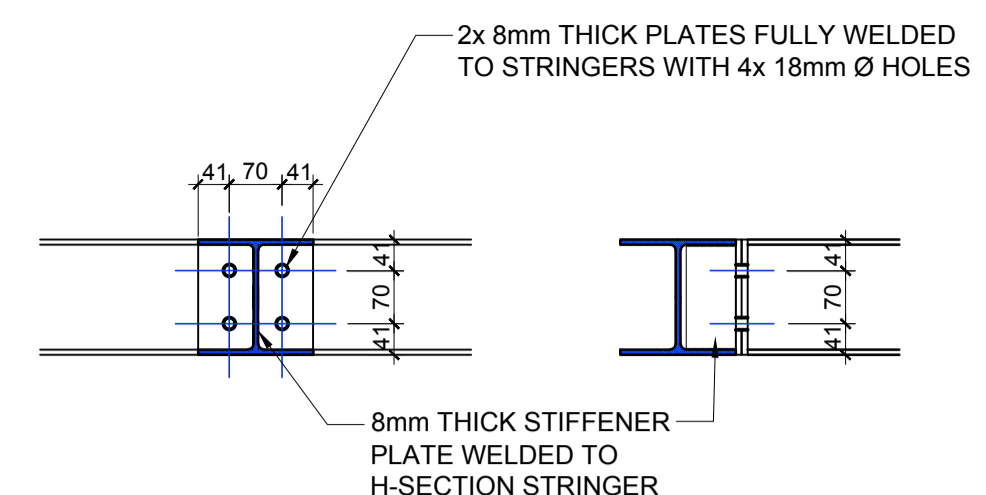
NOTE: ALL STEEL TO CONCRETE CONNECTIONS TO BE FIXED USING HILTI HSA M16 STUD ANCHORS @ 100mm EMBEDMENT UNLESS OTHERWISE SPECIFIED

NOTE: ALL BALUSTRADES TO BE POSITIONED & SPECIFIED BY ARCHITECT

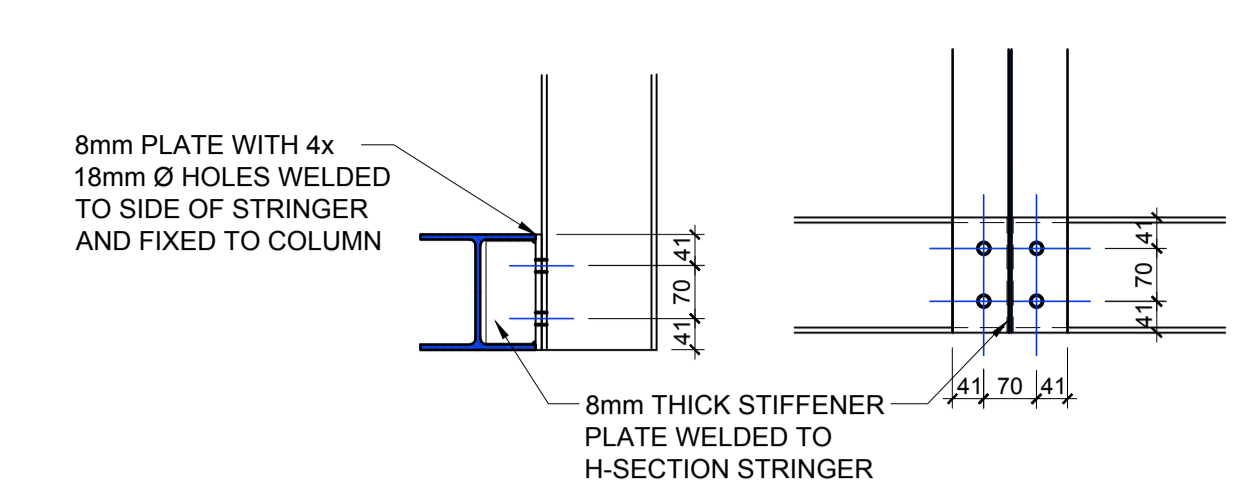
NOTE: ALL SERVICES TO BE EXPOSED BY HAND



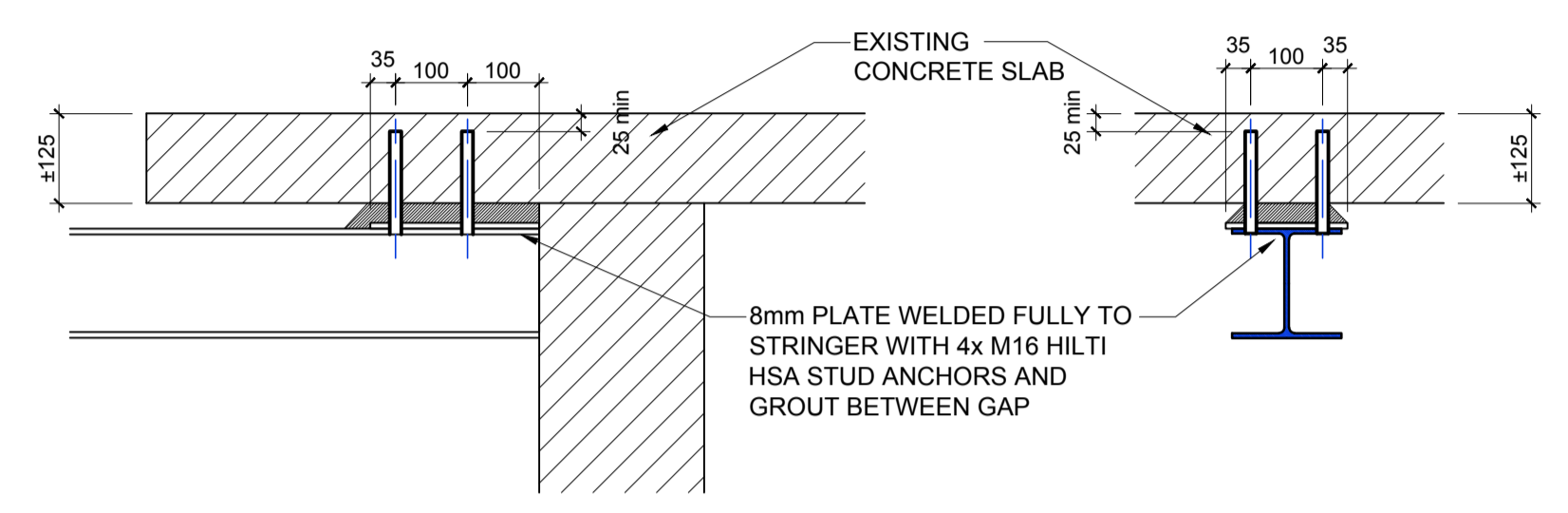
DETAIL 1
SCALE 1 : 10



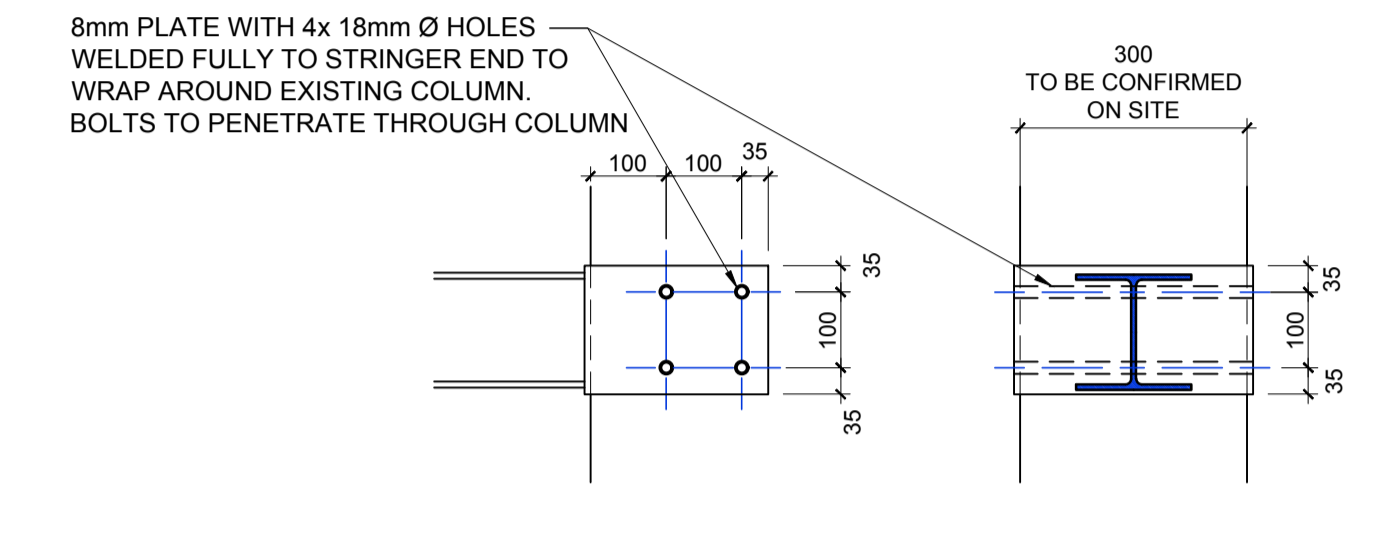
DETAIL 2
SCALE 1 : 10



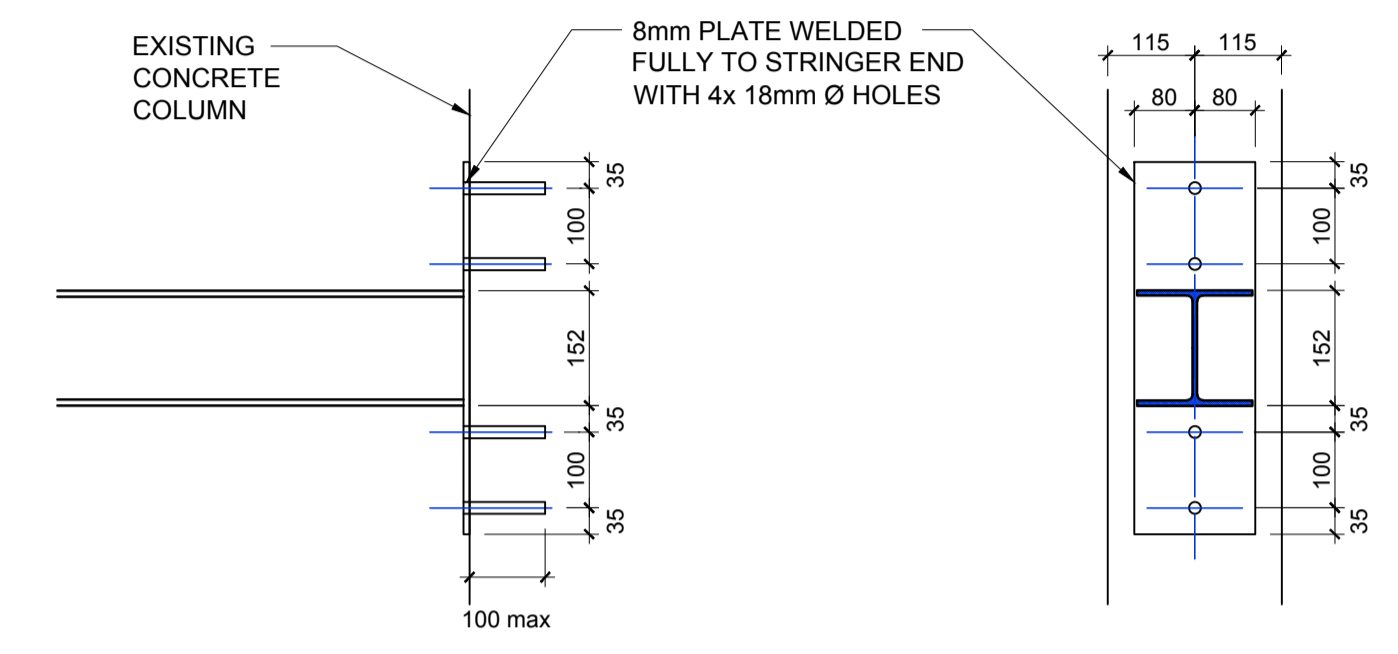
DETAIL 3
SCALE 1 : 10



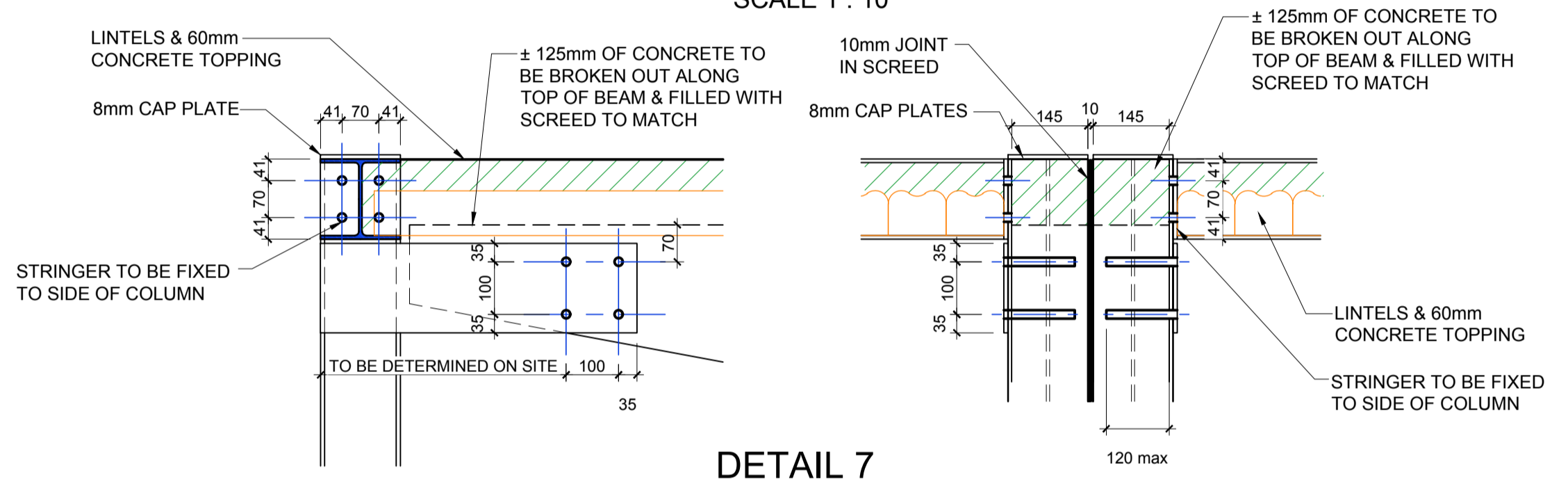
DETAIL 4
SCALE 1 : 10



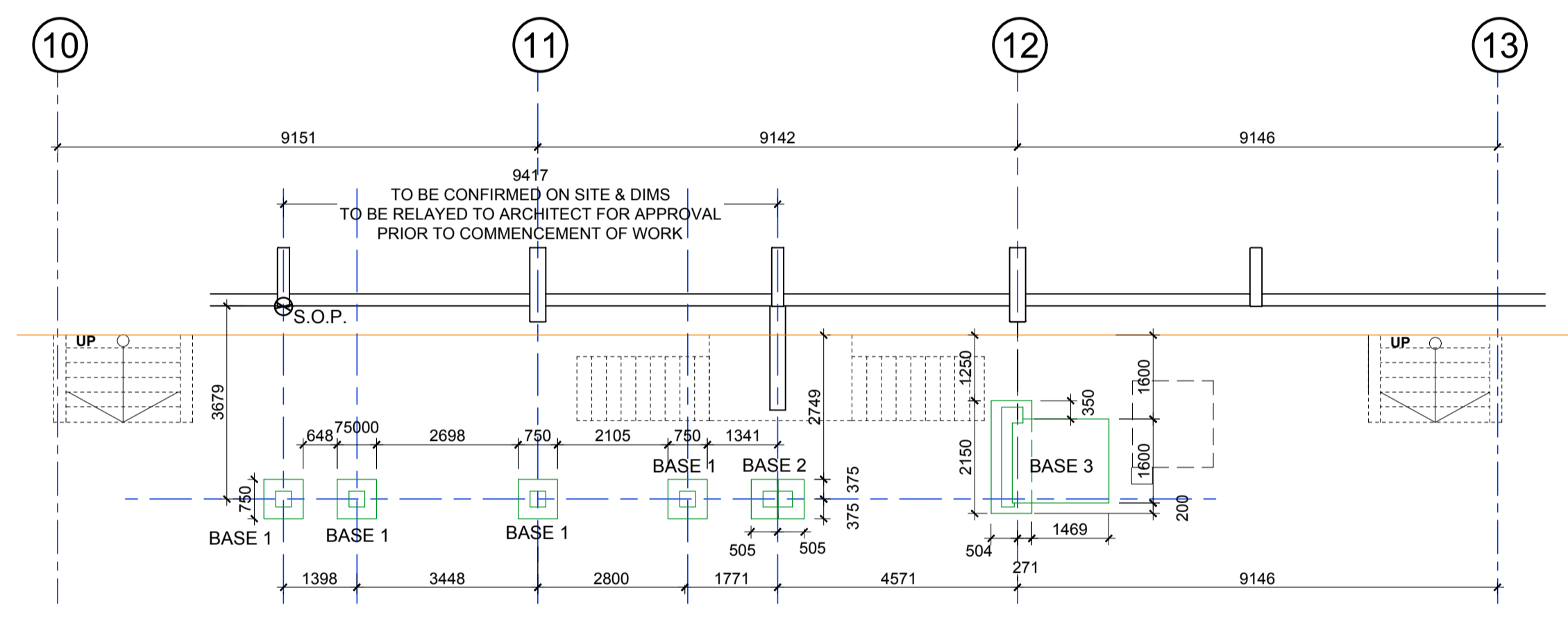
DETAIL 5
SCALE 1 : 10



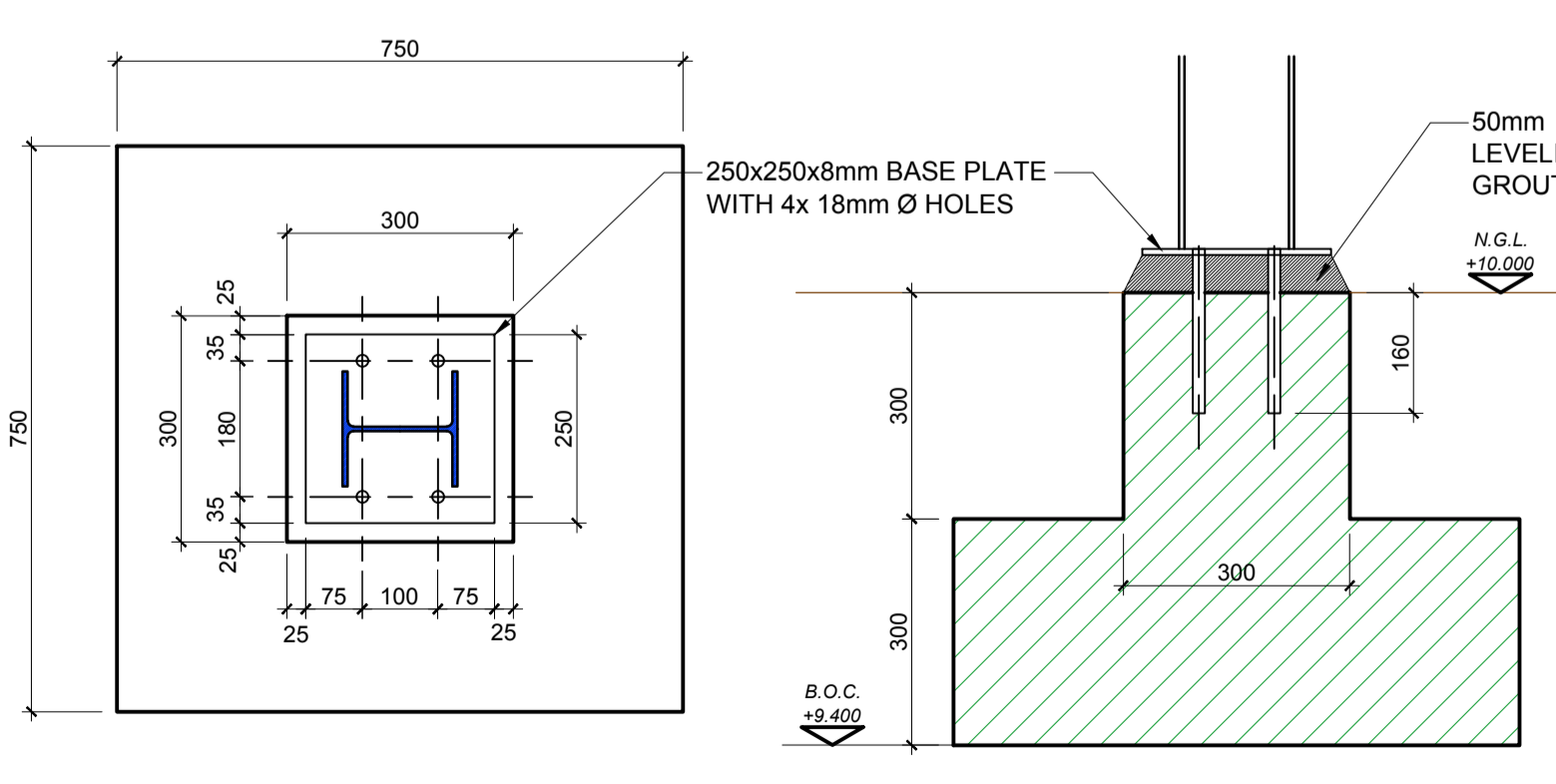
DETAIL 6
SCALE 1 : 10



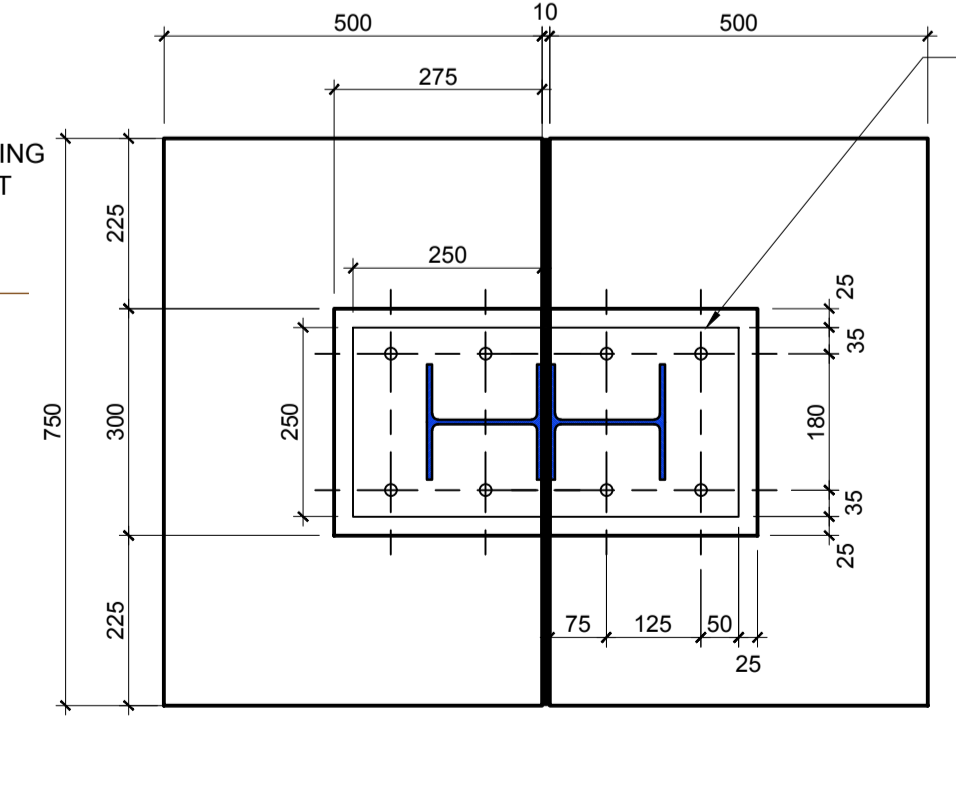
DETAIL 7
SCALE 1 : 10



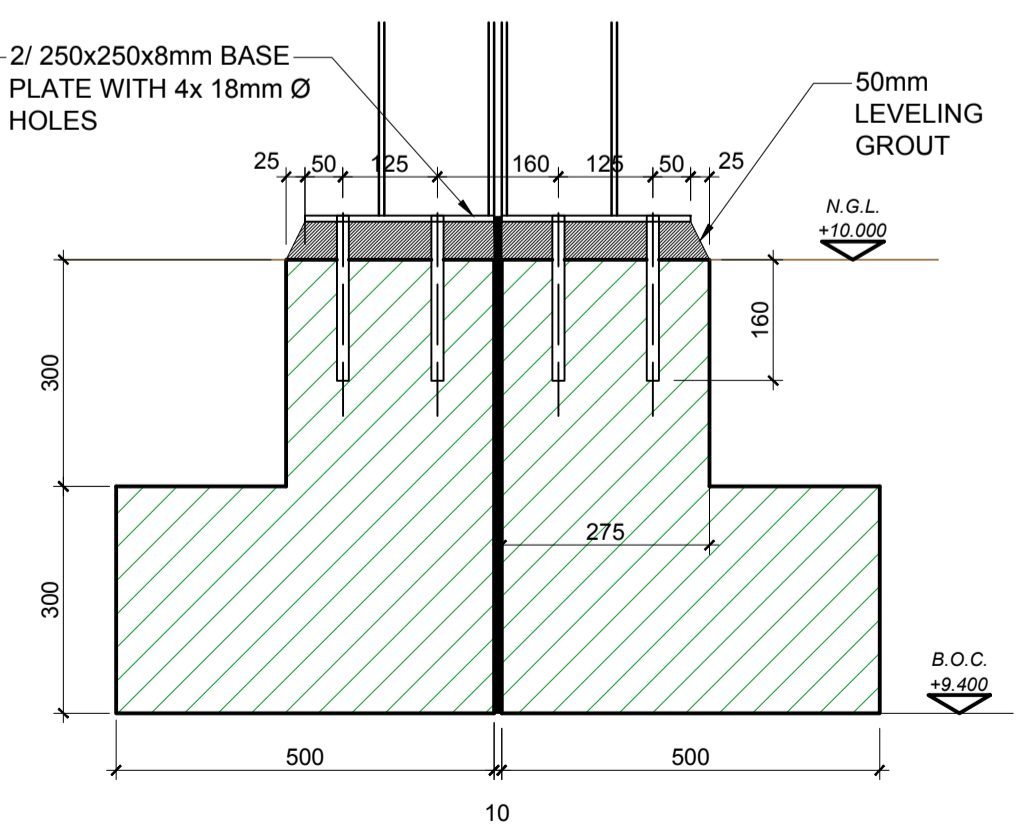
DETAIL 8
SCALE 1 : 10



TYPICAL BASE 1
SCALE 1 : 10
4 No. OFF

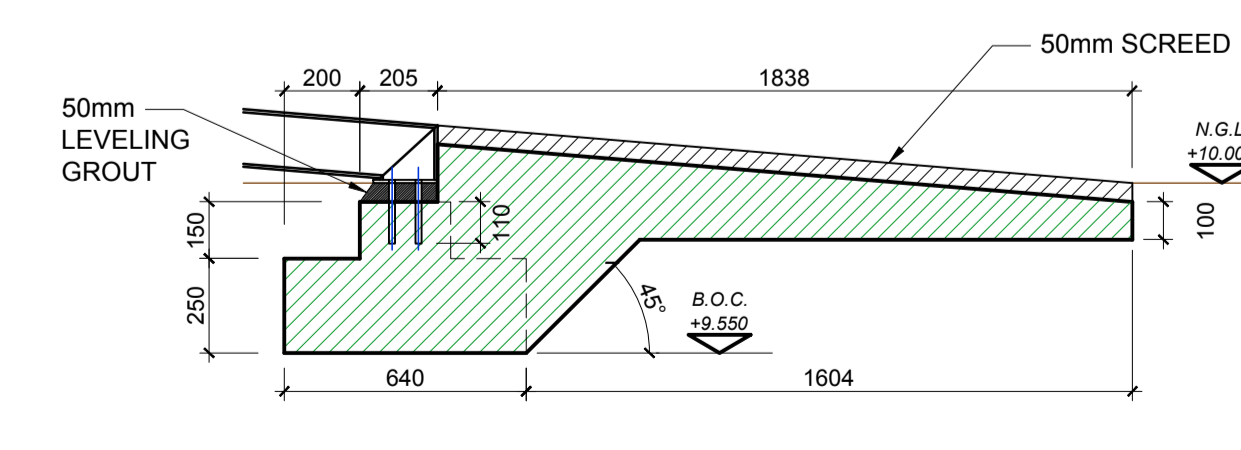
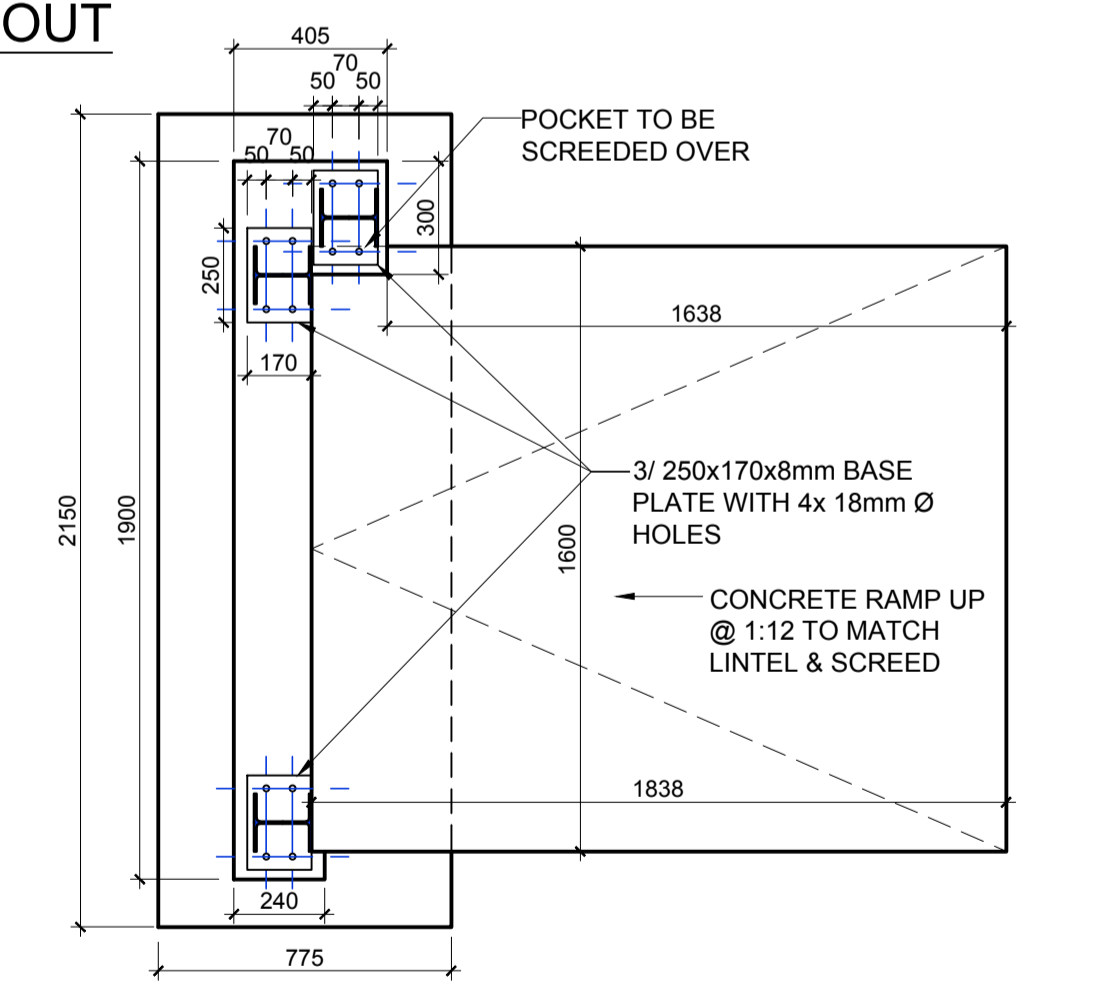
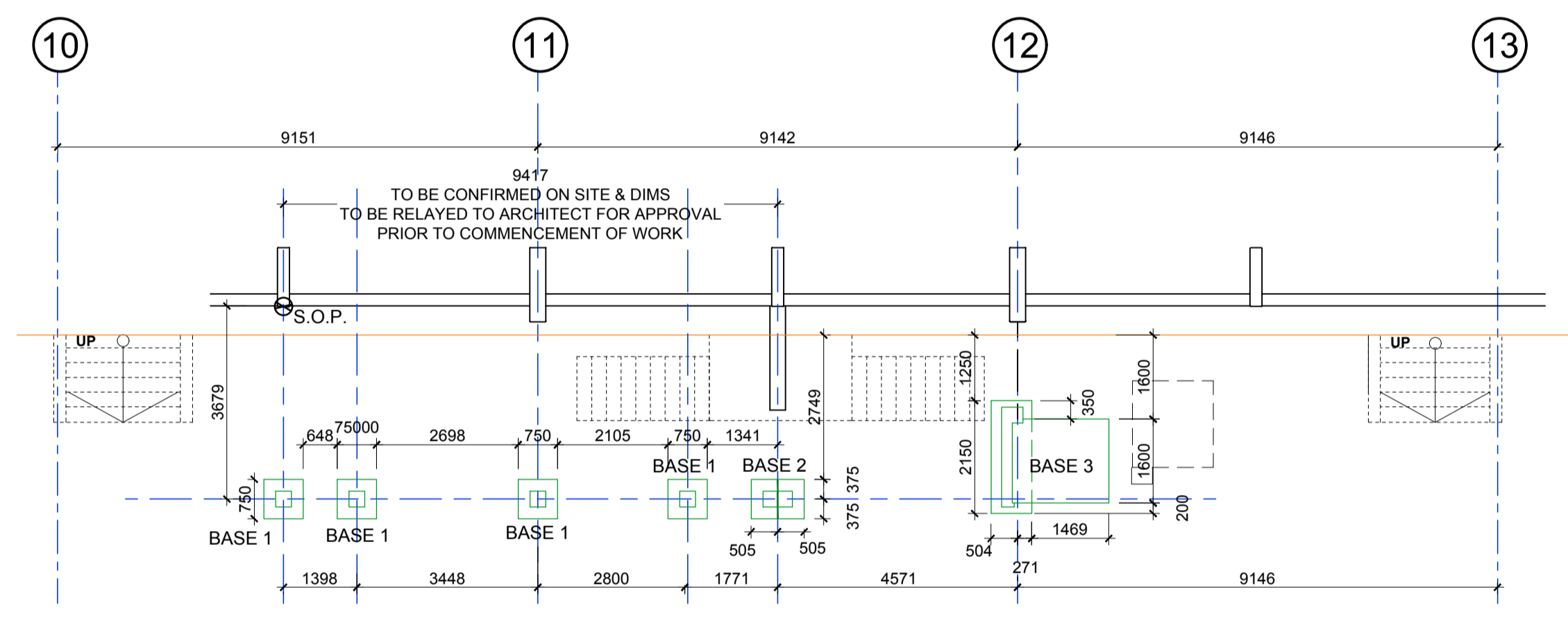


BASE 2
SCALE 1 : 10



BASE 3
SCALE 1 : 10

CONCRETE SETTING OUT
SCALE 1 : 100



| | | | | |
|-----|------|-----------|------------|-------|
| No. | Date | Revisions | FOR TENDER | PAS |
| | | | | Drawn |

CALIBRE.
Civil and Structural Engineering
011 463 2393 :Tel info@calibre.co.za 011 463 2347 :Fax

Client
THE UNIVERSITY OF THE WITWATERSRAND.

Architect
26'10 SOUTH ARCHITECTS

Project
HOCKEY STADIUM ADDITIONS

Drawing Title
PARAPLEGIC RAMP DETAILS

| Designed | Date | Dwg/Size |
|----------|----------|----------|
| R.O. | OCT 2017 | A1 |
| Drawn | Scale | Status |
| P.A.S. | OCT 2017 | AS SHOWN |
| Checked | | |
| | | |
| Approved | | |
| | | |

988-005- DRG - STR - S - 007

Revision: T

Copyright Reserved