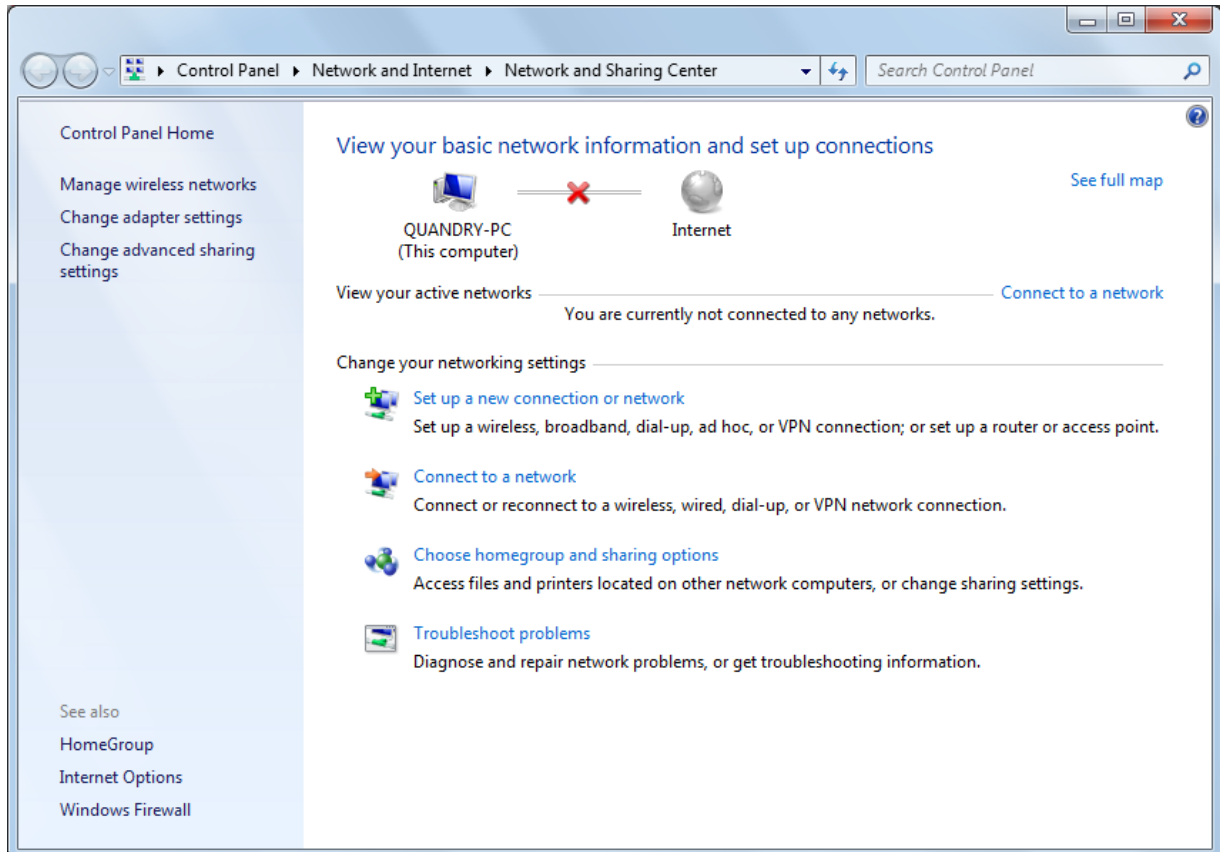
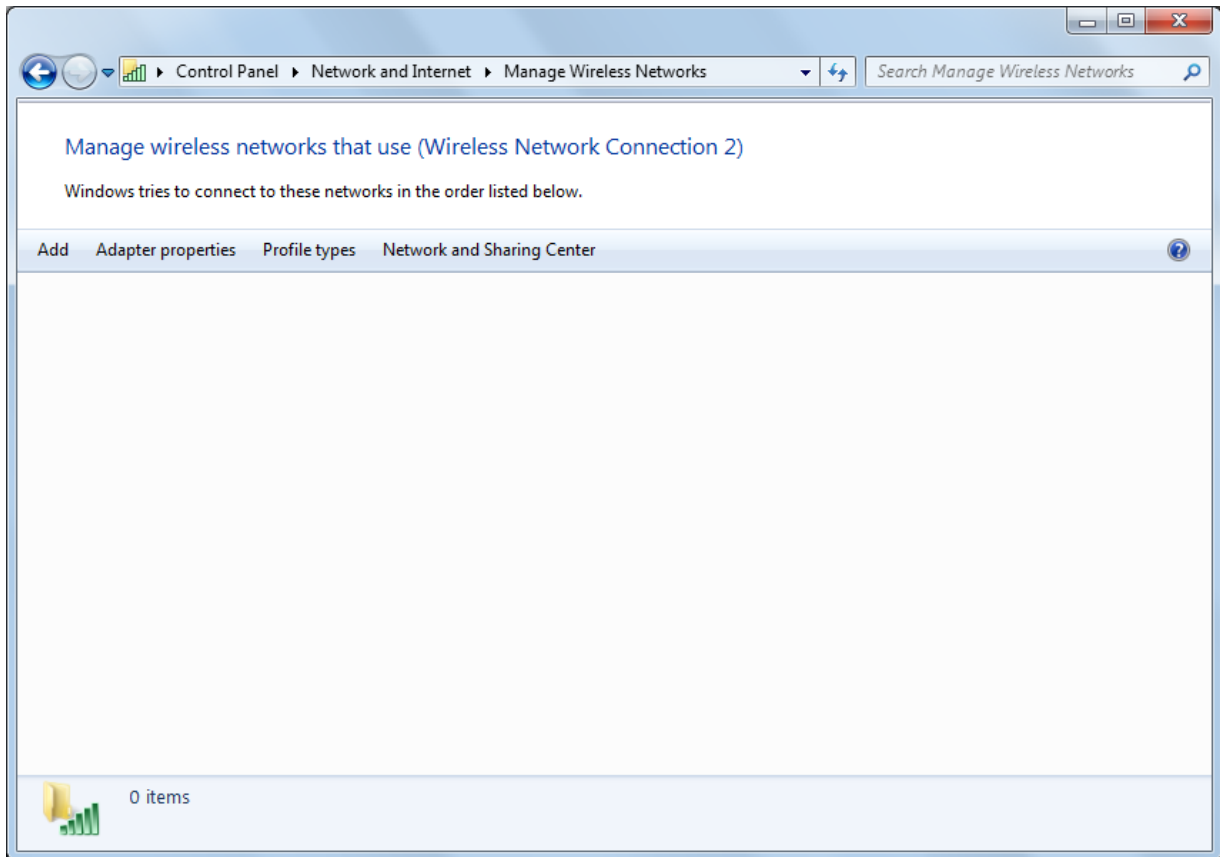
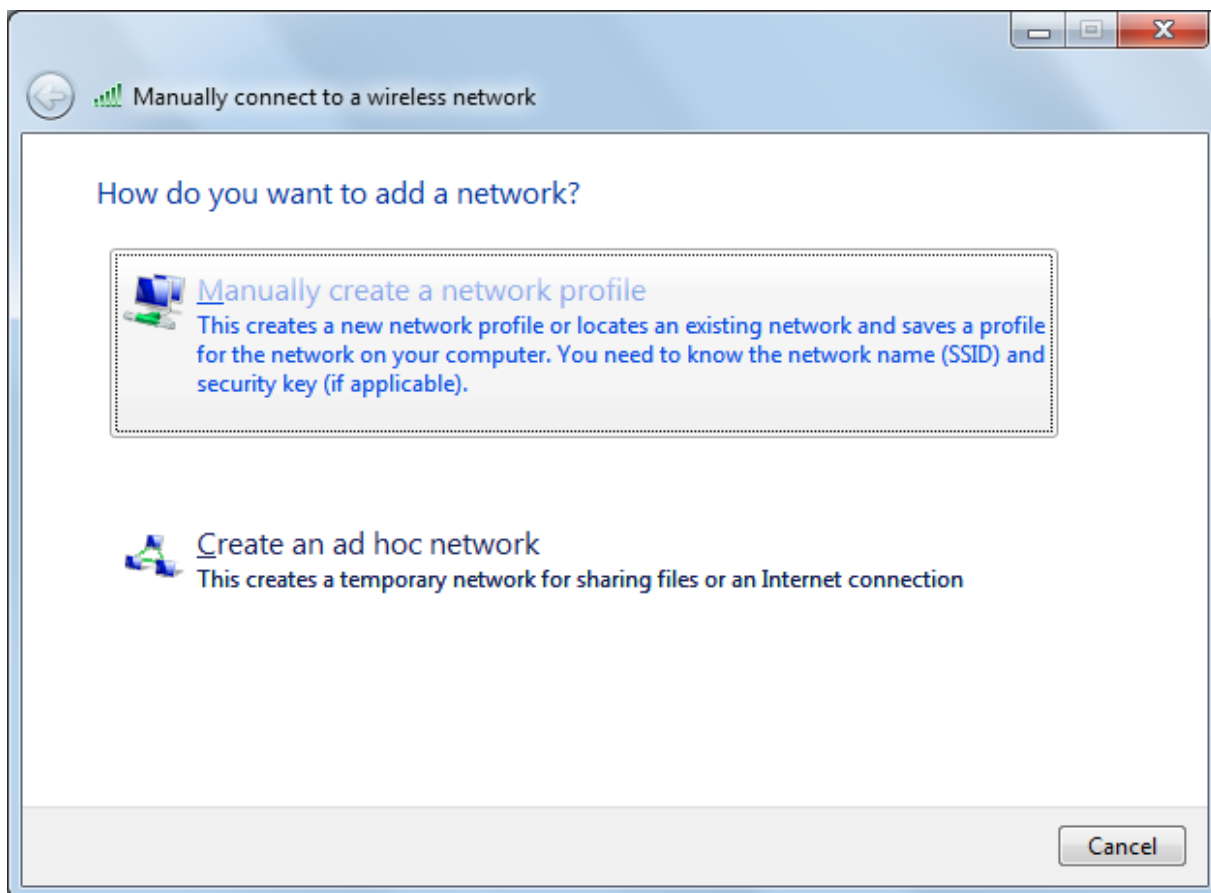


## 1. Open Network and Sharing Centre, Click on Manage wireless networks





**2. Click Add**



**3. Click 'Manually Create Network Profile'**

Manually connect to a wireless network

Enter information for the wireless network you want to add

Network name: Cns\_Wpa

Security type: WPA-Enterprise

Encryption type: AES

Security Key:  Hide characters

Start this connection automatically

Connect even if the network is not broadcasting

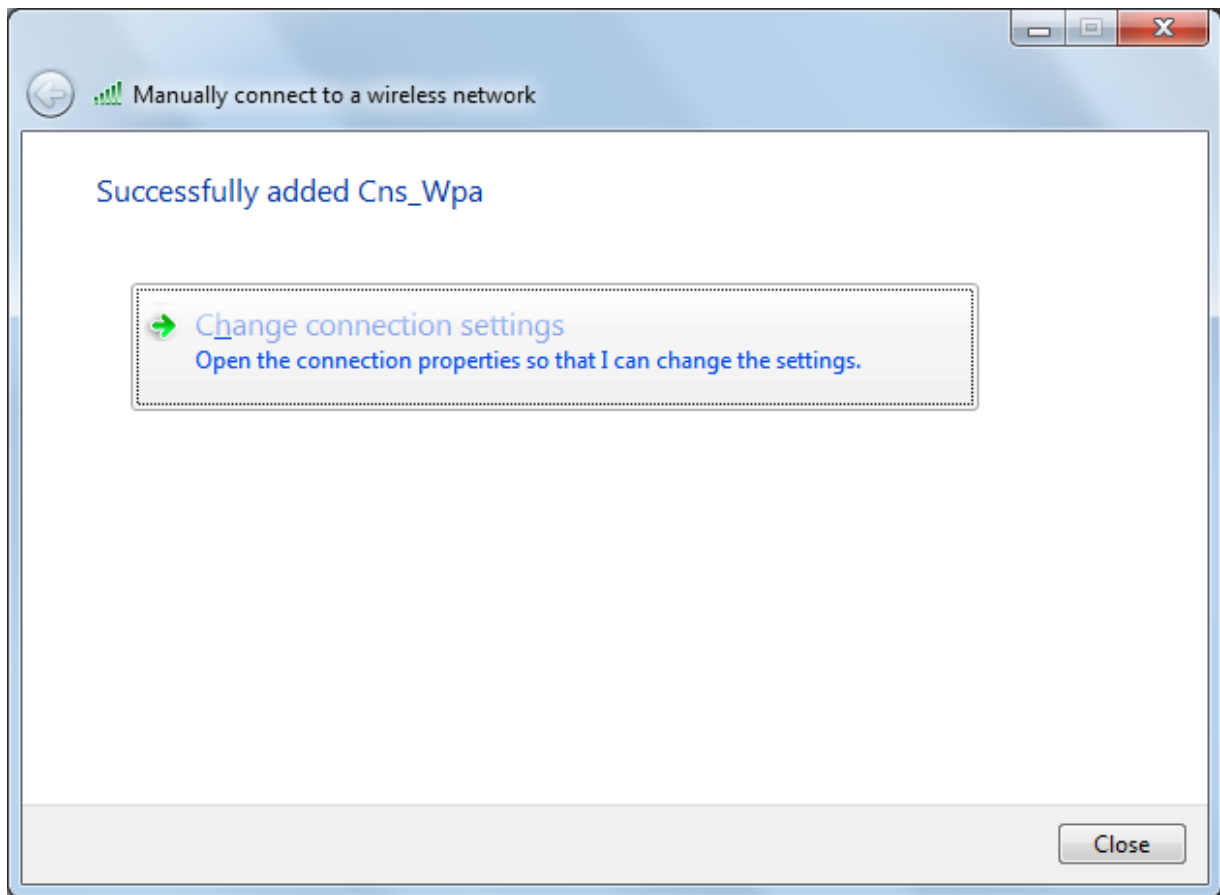
Warning: If you select this option, your computer's privacy might be at risk.

Next Cancel

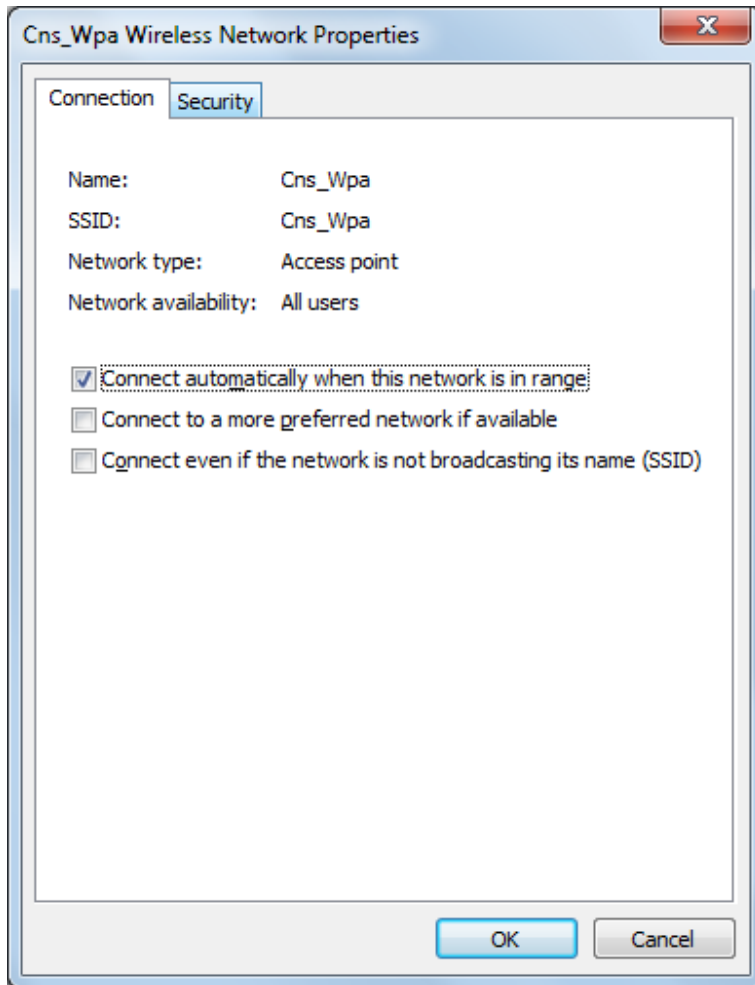
4. Network name: Cns\_Wpa

5. Security Type: Choose WPA-Enterprise

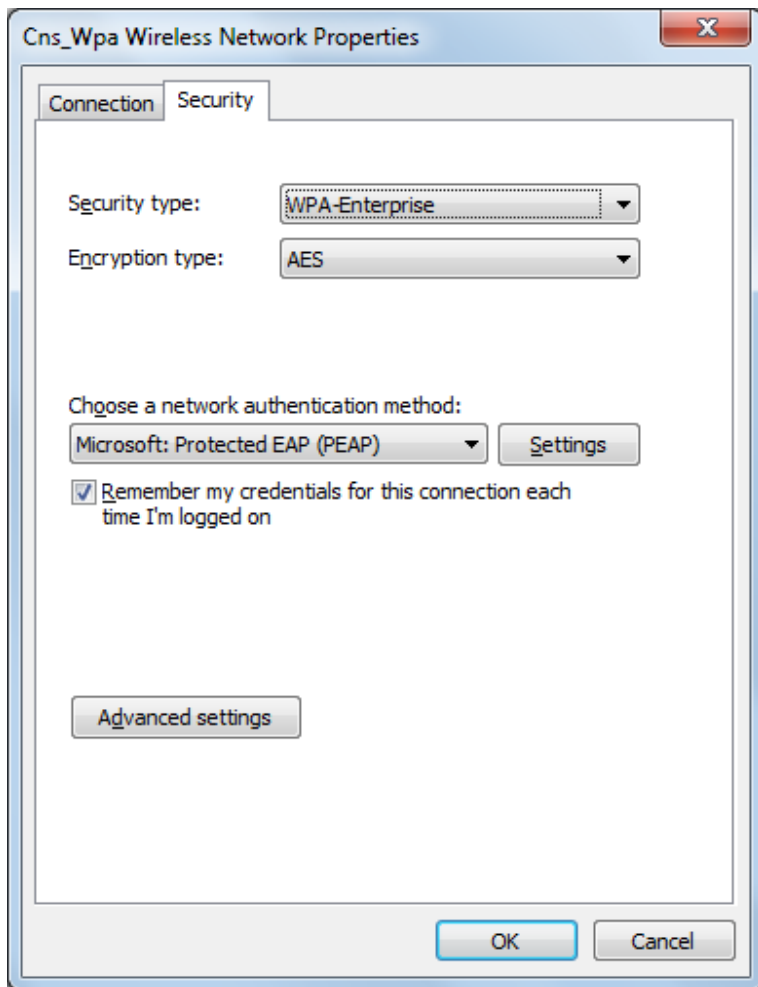
6. Encryption Type: Choose AES and next



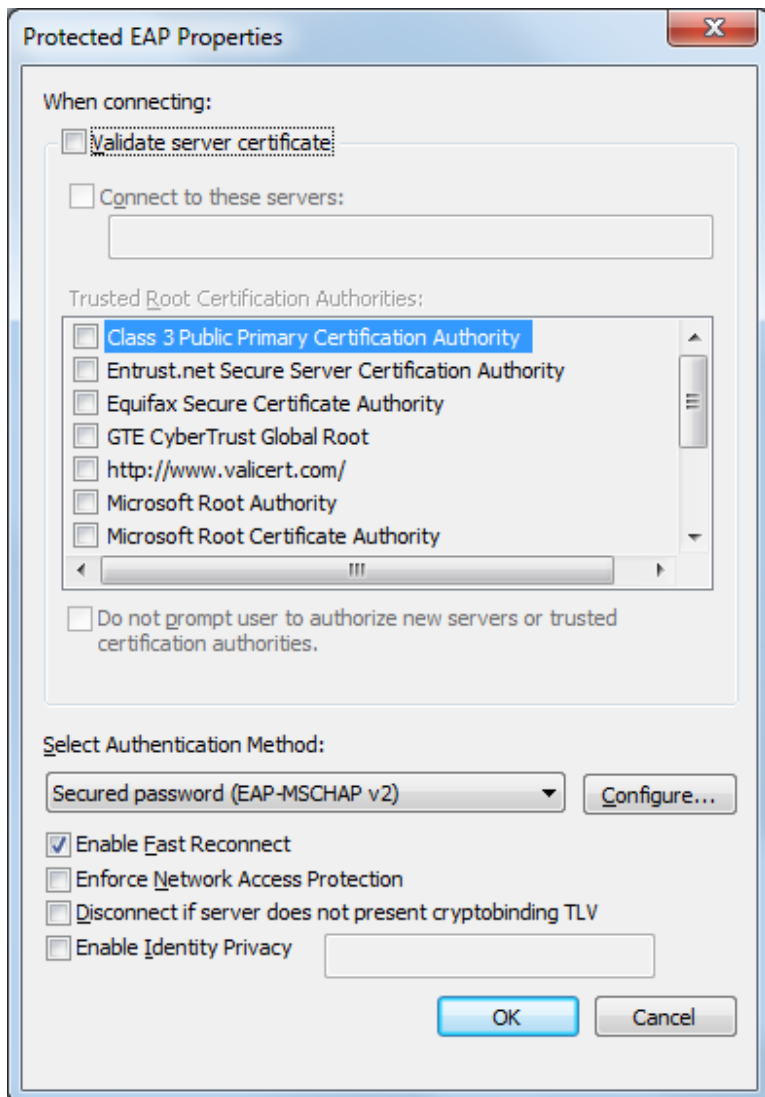
**7. Click Change connection Settings**



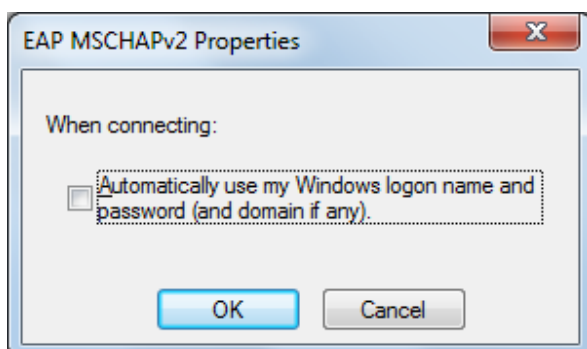
8. Uncheck 'connect to a more preferred network if available'



9. Click 'Security'

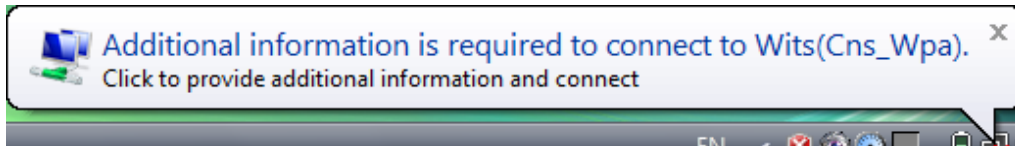


**10. Uncheck 'validate server certificate'**

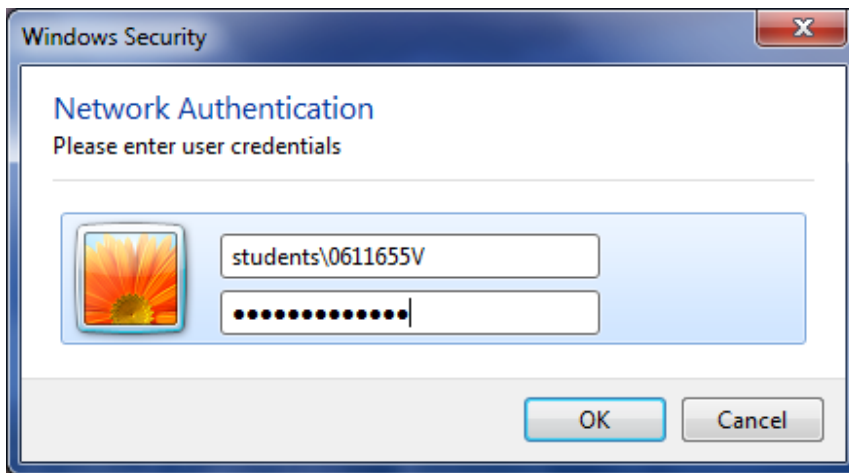




11. Uncheck 'automatically use my Windows logon name and password (and domain if any)'.
12. Check Ok,Ok,Ok, Then wait for the Balloon



13. Click on Balloon above

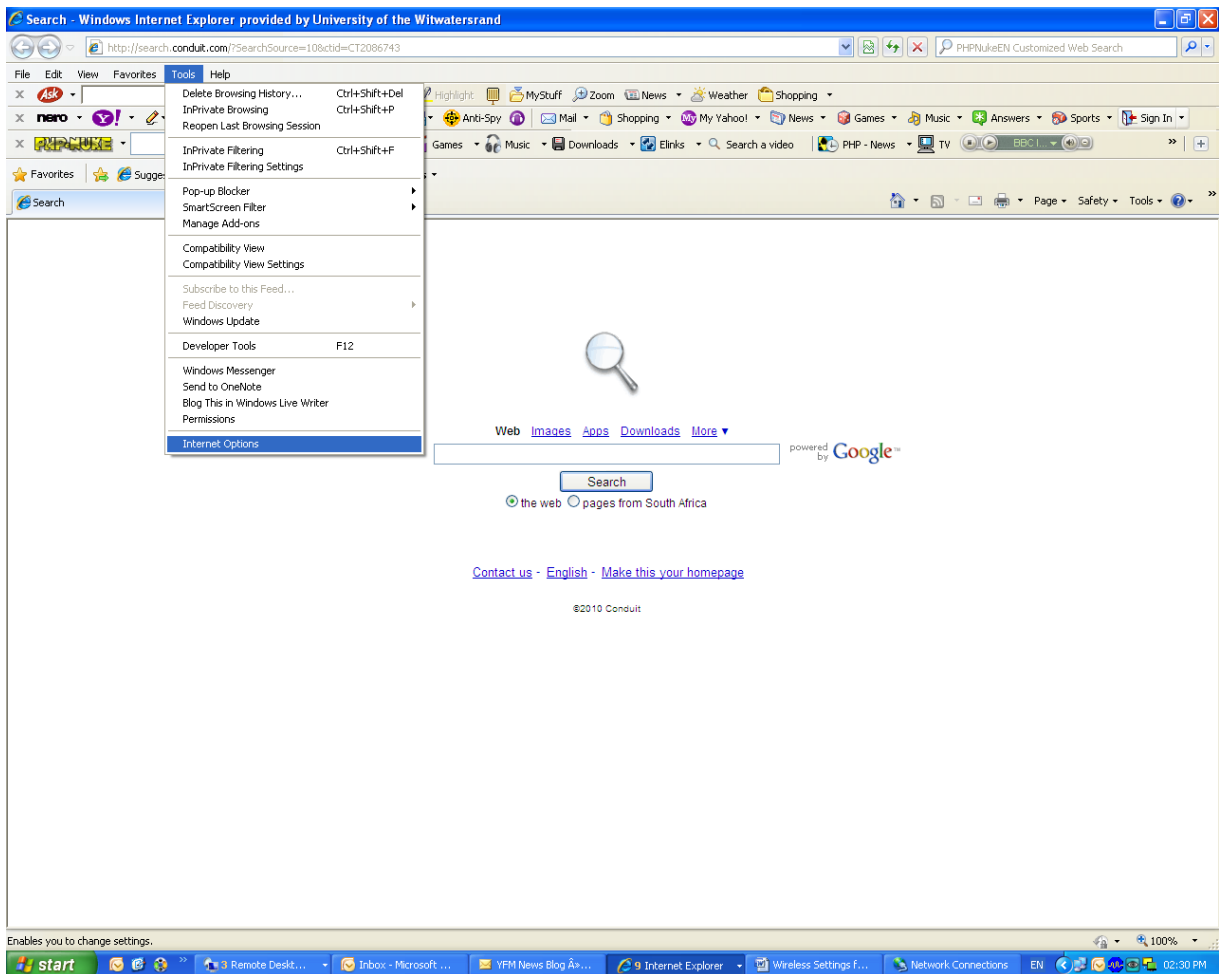


14. Enter your Username e.g. students\0611655v and Password

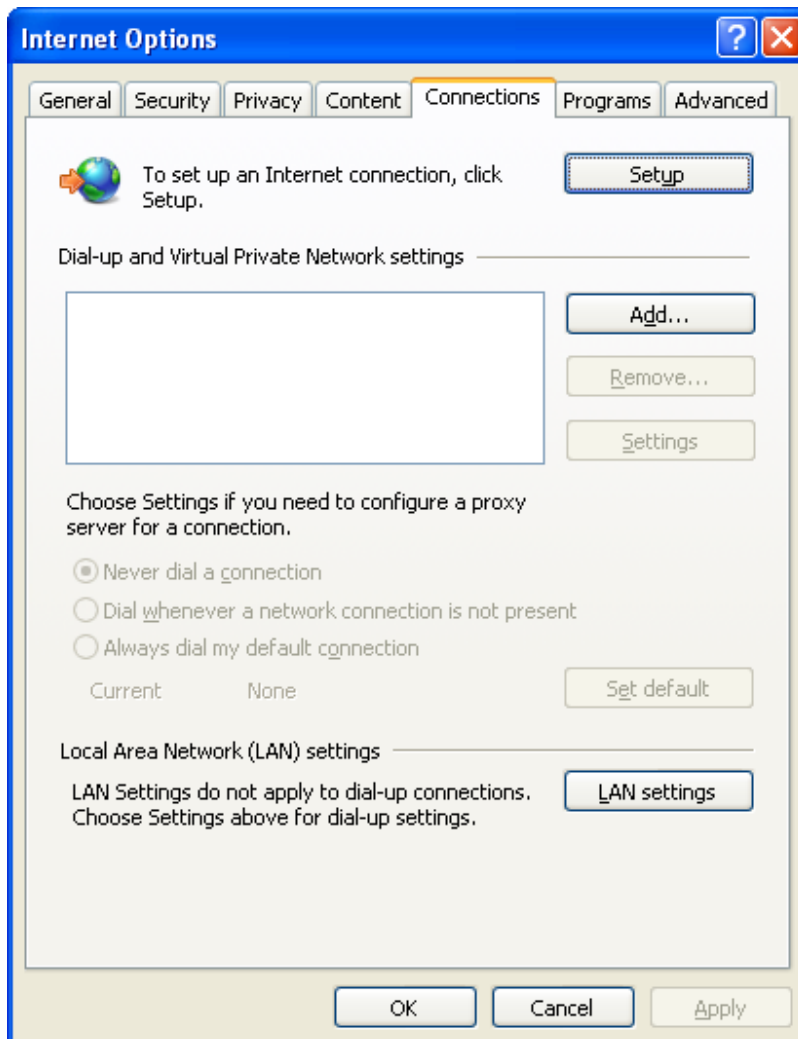
## INTERNET SETTINGS

## INTERNET EXPLORER SETTINGS

### 1. Open internet explorer, click 'tools, internet settings'



## 2. Click 'Connections , Lan Settings'



**Local Area Network (LAN) Settings** ✕

**Automatic configuration**  
Automatic configuration may override manual settings. To ensure the use of manual settings, disable automatic configuration.

Automatically detect settings

Use automatic configuration script

Address:

**Proxy server**

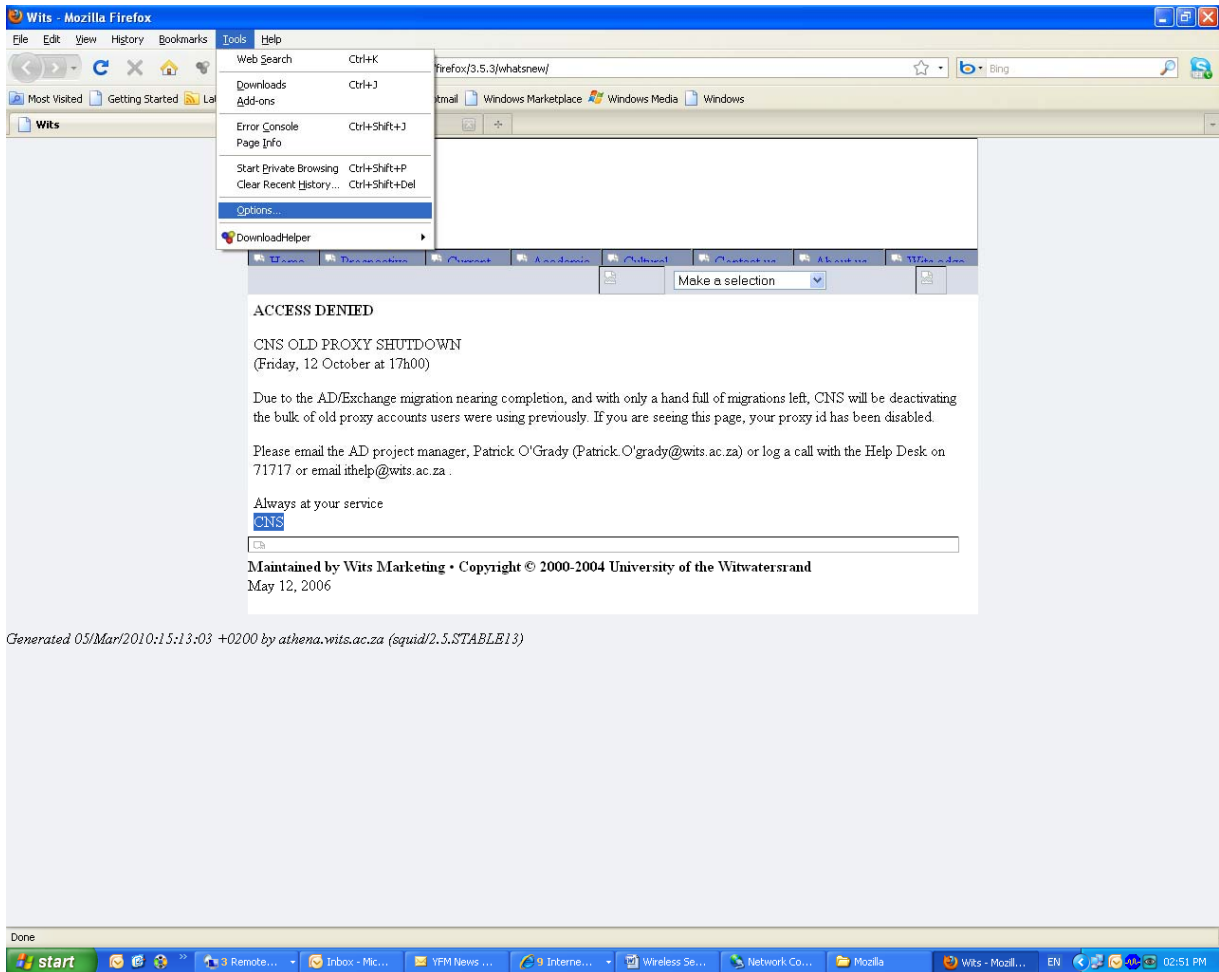
Use a proxy server for your LAN (These settings will not apply to dial-up or VPN connections).

Address:  Port:

Bypass proxy server for local addresses

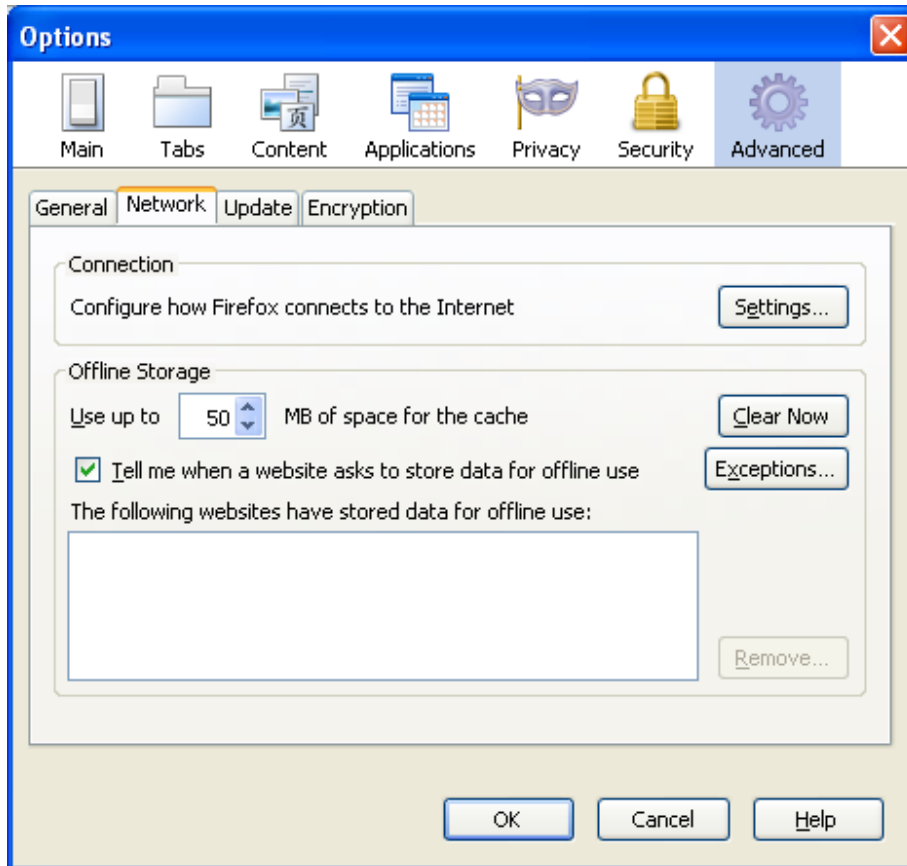
## Mozilla Settings

### 1. Click 'Tools, Options



Generated 05/Mar/2010:15:13:03 +0200 by athena.wits.ac.za (squid/2.5.STABLE13)

2. Click 'Advanced, Network, Settings'



**Connection Settings** ✕

Configure Proxies to Access the Internet

No proxy

Auto-detect proxy settings for this network

Manual proxy configuration:

HTTP Proxy:  Port:

Use this proxy server for all protocols

SSL Proxy:  Port:

FTP Proxy:  Port:

Gopher Proxy:  Port:


SOCKS Host:  Port:

SOCKS v4  SOCKS v5

No Proxy for:   
Example: .mozilla.org, .net.nz, 192.168.1.0/24

Automatic proxy configuration URL:

**Authentication Required** ✕

 The proxy proxy.wits.ac.za:80 is requesting a username and password. The site says: "WITS Squid proxy-caching web server"

User Name:

Password:

Use Password Manager to remember this password.