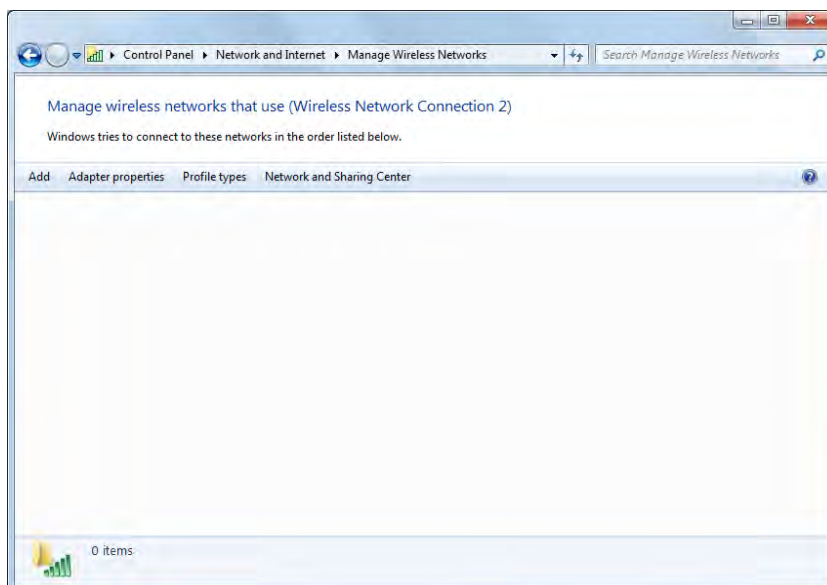
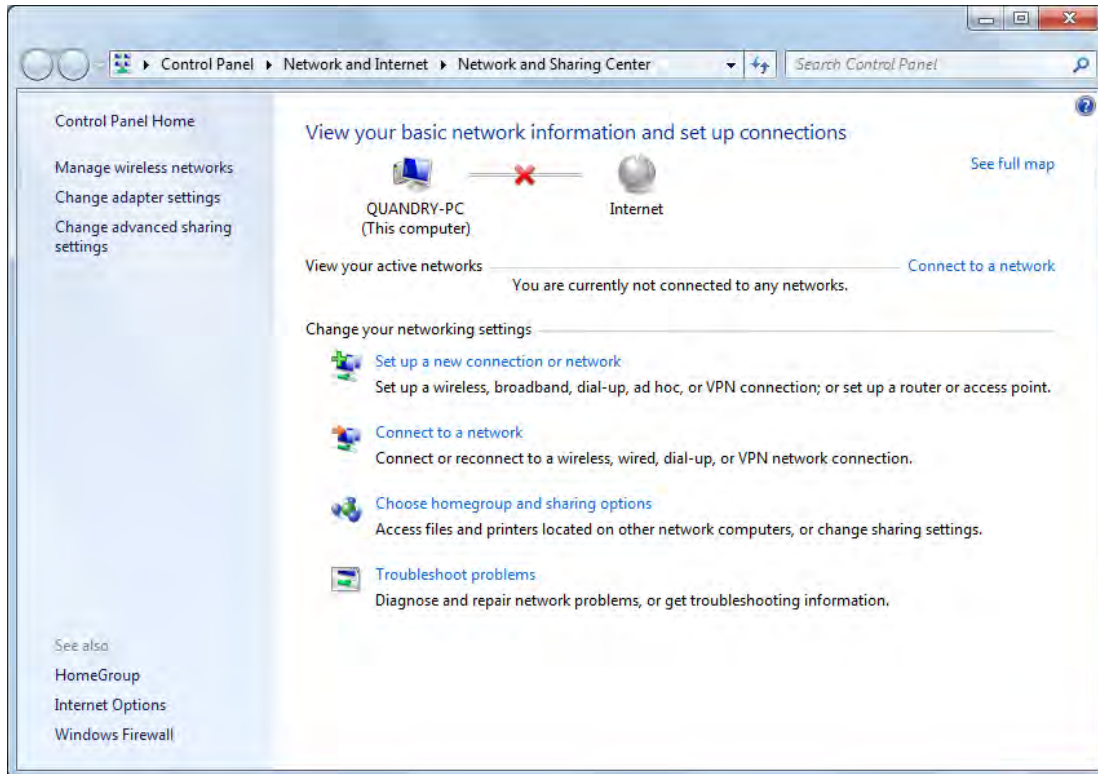
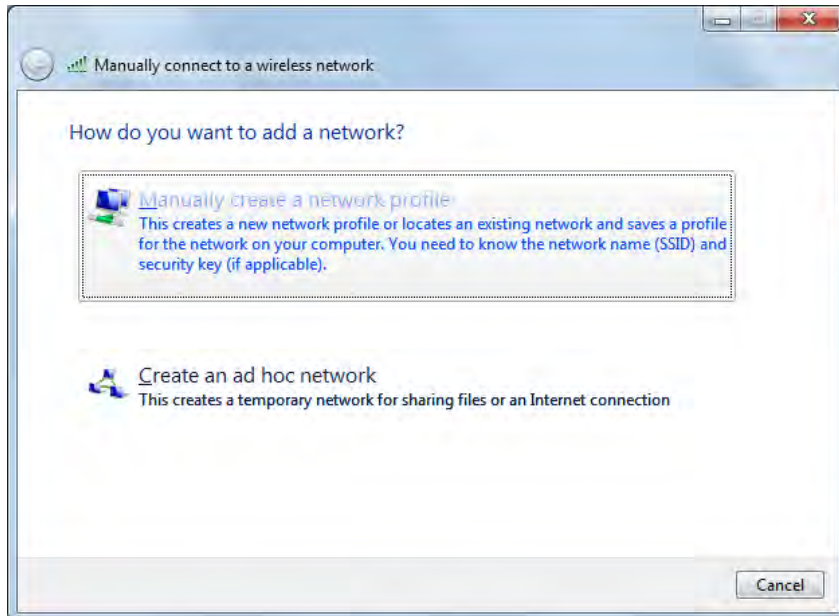


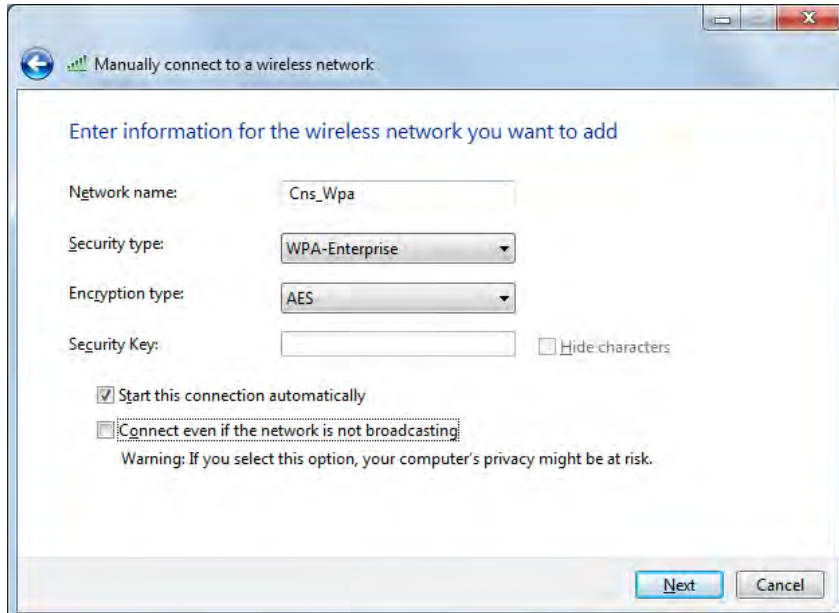
1. Open Network and Sharing Centre, Click on Manage wireless networks



2. Click Add



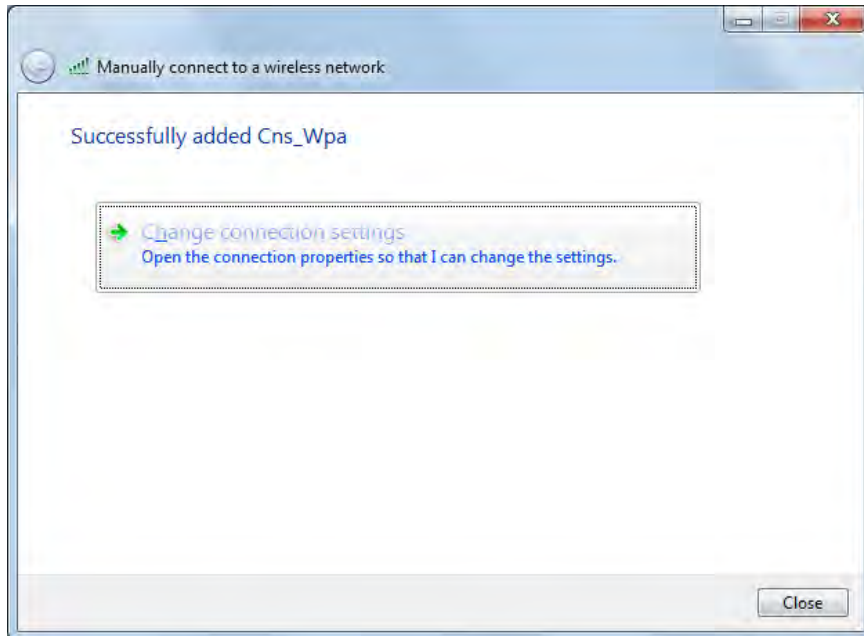
3. Click 'Manually Create Network Profile'



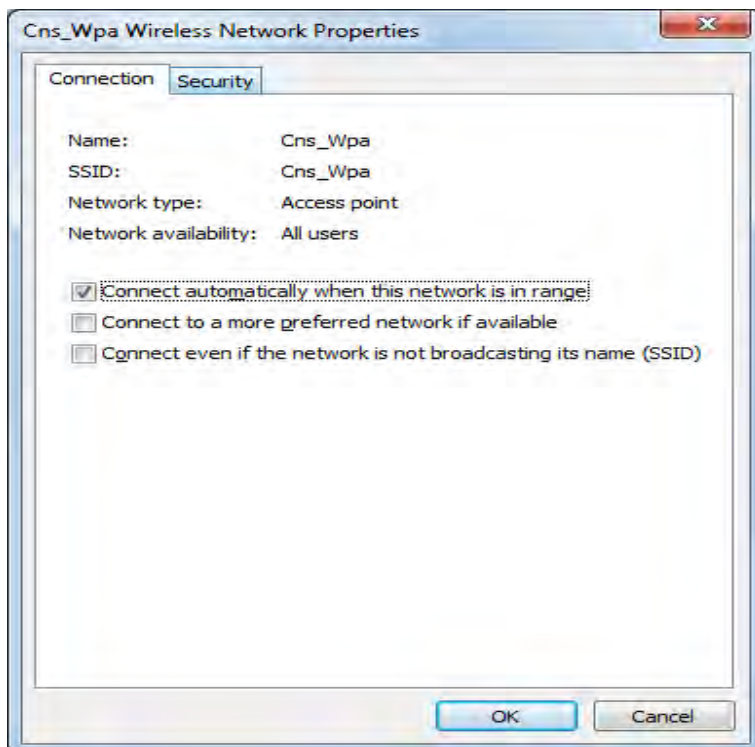
4. Network name: Cns_Wpa

5. Security Type: Choose WPA-Enterprise

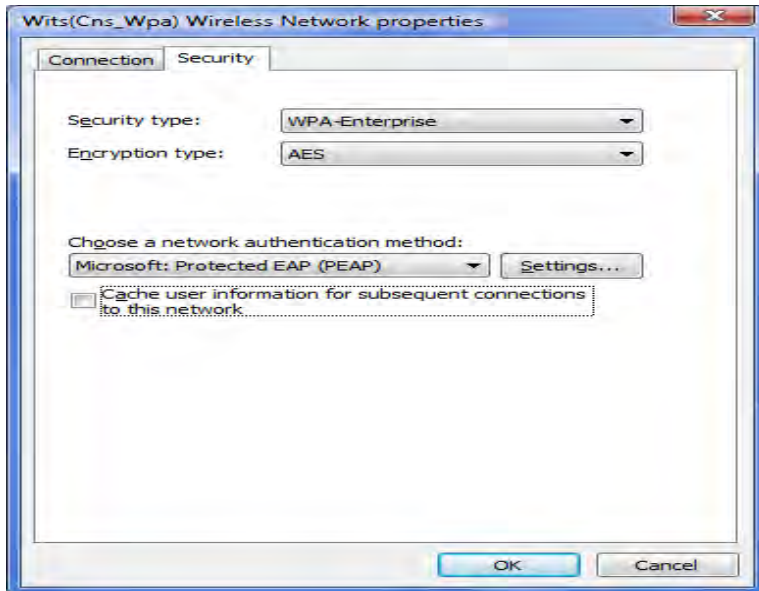
6. Encryption Type: Choose AES and next



7. Click Change connection Settings



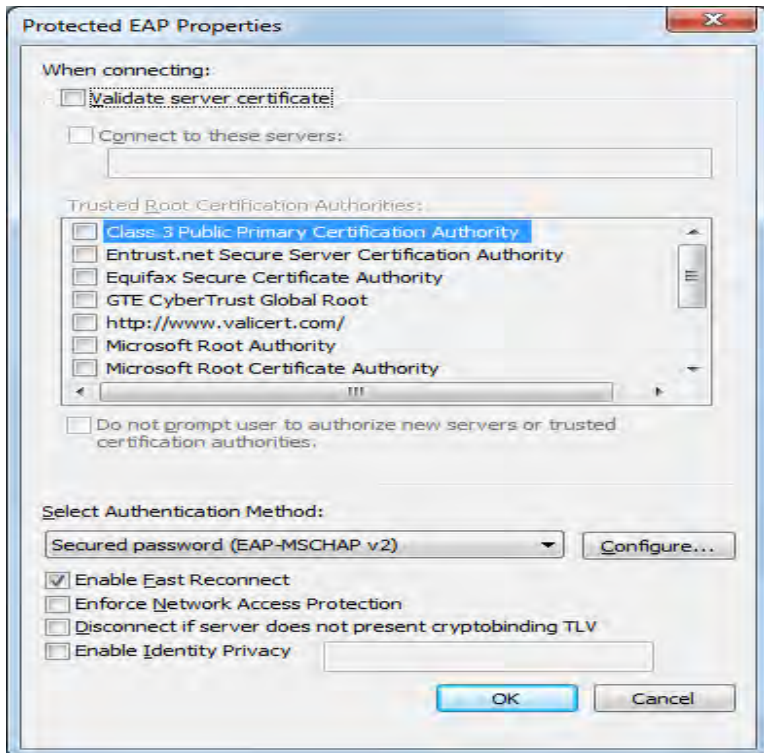
8. Uncheck 'connect to a more preferred network if available'



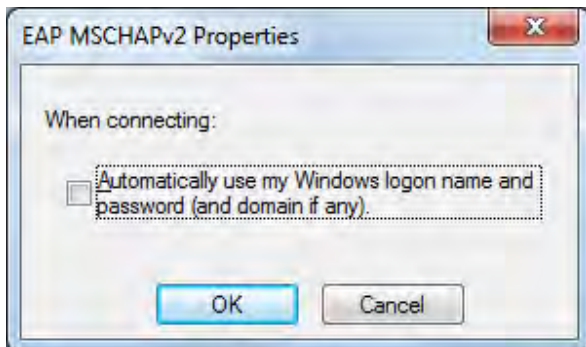
9. Click 'Security'

,

Uncheck 'cache user information for subsequent connections to this network'

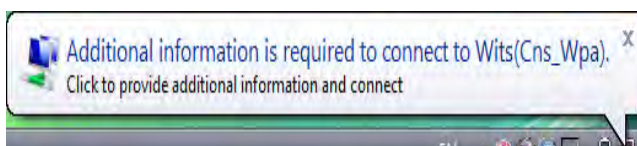


10. Uncheck 'validate server certificate'

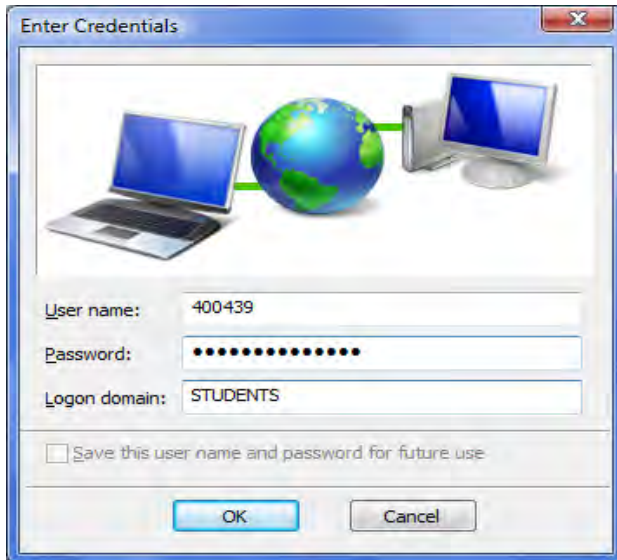


11. Uncheck 'automatically use my Windows logon name and password (and domain if any)'.

12. Check Ok,Ok,Ok, Then wait for the Balloon



13. Click on Balloon above

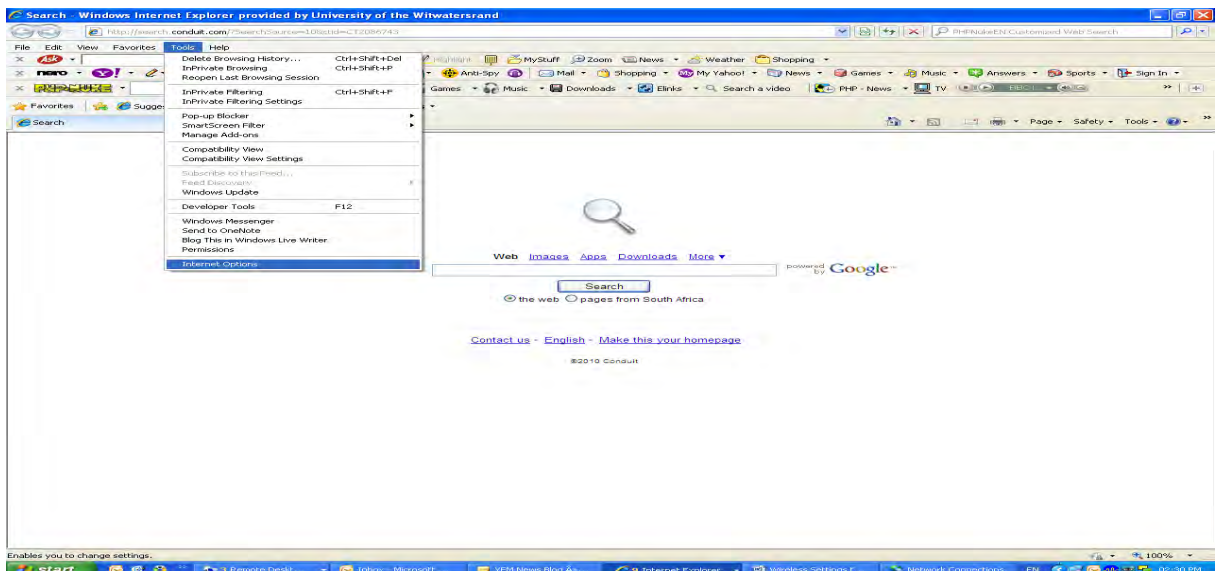


14. Enter your credentials as above

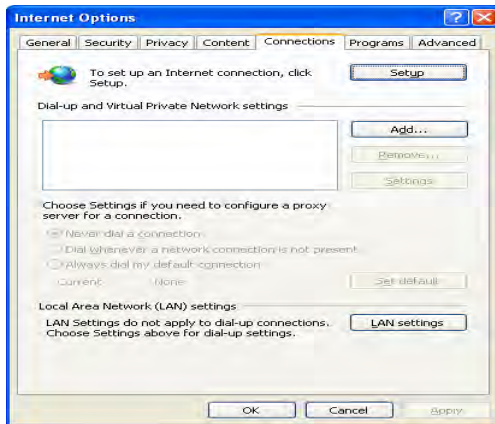
INTERNET SETTINGS

INTERNET EXPLORER SETTINGS

1. Open internet explorer, click 'tools, internet settings'



2. Click 'Connections , Lan Settings'

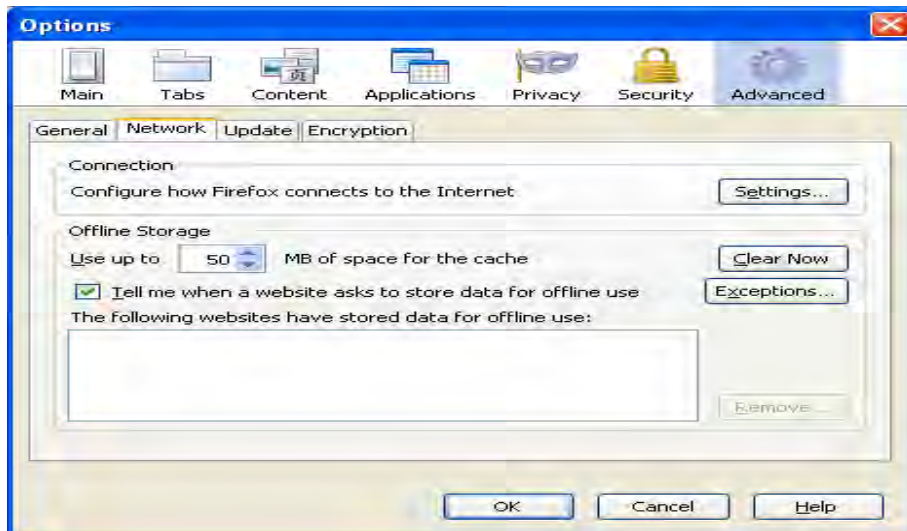


Mozilla Settings

1. Click 'Tools, Options'



2. Click 'Advanced, Network, Settings'



Connection Settings

Configure Proxies to Access the Internet

No proxy

Auto-detect proxy settings for this network

Manual proxy configuration:

HTTP Proxy:	<input type="text" value="proxys.wits.ac.za"/>	Port:	<input type="text" value="80"/>
<input checked="" type="checkbox"/> Use this proxy server for all protocols			
SSL Proxy:	<input type="text" value="proxys.wits.ac.za"/>	Port:	<input type="text" value="80"/>
FTP Proxy:	<input type="text" value="proxys.wits.ac.za"/>	Port:	<input type="text" value="80"/>
Gopher Proxy:	<input type="text" value="proxys.wits.ac.za"/>	Port:	<input type="text" value="80"/>
SOCKS Host:	<input type="text" value="proxys.wits.ac.za"/>	Port:	<input type="text" value="80"/>

No Proxy for:
Example: .mozilla.org, .net.nz, 192.168.1.0/24

Automatic proxy configuration URL:

Reload

OK Cancel Help

Authentication Required

The proxy proxy.wits.ac.za:80 is requesting a username and password. The site says: "WITS Squid proxy-caching web server"

User Name:

Password:

Use Password Manager to remember this password.

OK Cancel